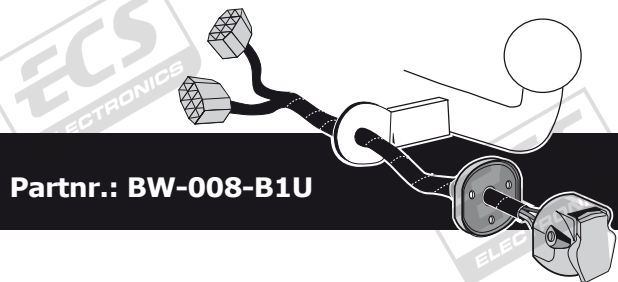




- **BMW 1 Series E81, E82, E87, E88**
- **BMW 1 Series F20, F21 (without PDC cut off function)**
- **BMW 3 Series E90, E91, E92, E93**
- **BMW 3 Series F30, F31, F34 (without PDC cut off function)**
- **BMW 5 Series E60, E61, F07, F10, F11** (for RHD see next page)
- **BMW 7 Series E65, E66, F01, F02**
- **BMW X1 Series E84**
- **BMW X3 Series F25 (without PDC cut off function)**
- **BMW X5 Series E70**
- **BMW X6 Series E71**

This kit doesn't cut off Park Assist , if applicable



Partnr.: BW-008-B1U

- Fitting instructions electric wiring kit tow bar with 12-N socket up to DIN/ISO Norm 1724.
- We would expressly point out that assembly not carried out properly by a competent installer will result in cancellation of any right to damage compensation, in particular those arising by virtue of the product liability act.
- Contents of these kits and their fitting manuals are subject to alteration without notice, please ensure that these instructions are read and fully understood before commencing installation.
- Do not overload circuits; the maximum loads per connection are detailed in this manual.
- Attention! Before Installation, please read this manual carefully and inform your customer to consult the vehicle owners manual to check for any vehicle modifications required before towing.
- In the event of functional problems, troubleshooting must be limited to about 0.5 hours, contact the technical support:  
[ukts@ecs-electronics.com](mailto:ukts@ecs-electronics.com) / 07440 202 052.



# Right Hand Drive (RHD)

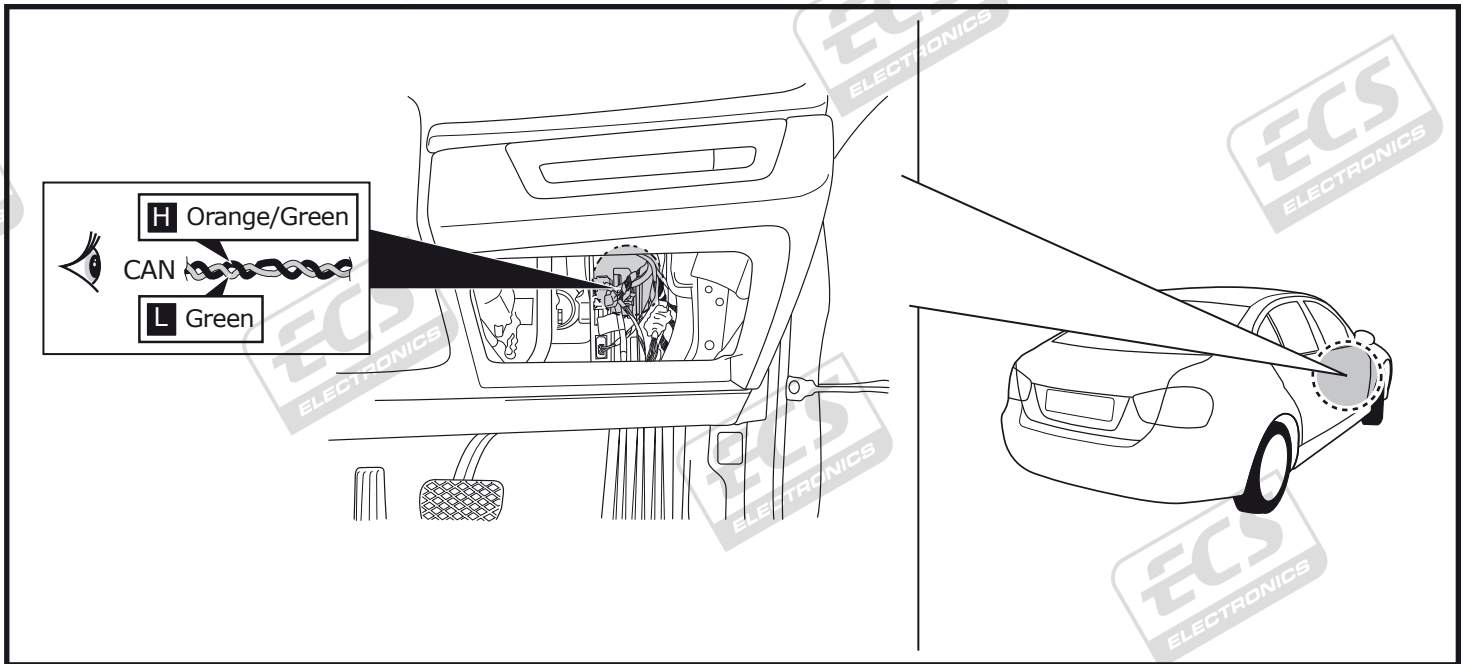
## Installation Supplement Instructions

Updated: 06/06/2013

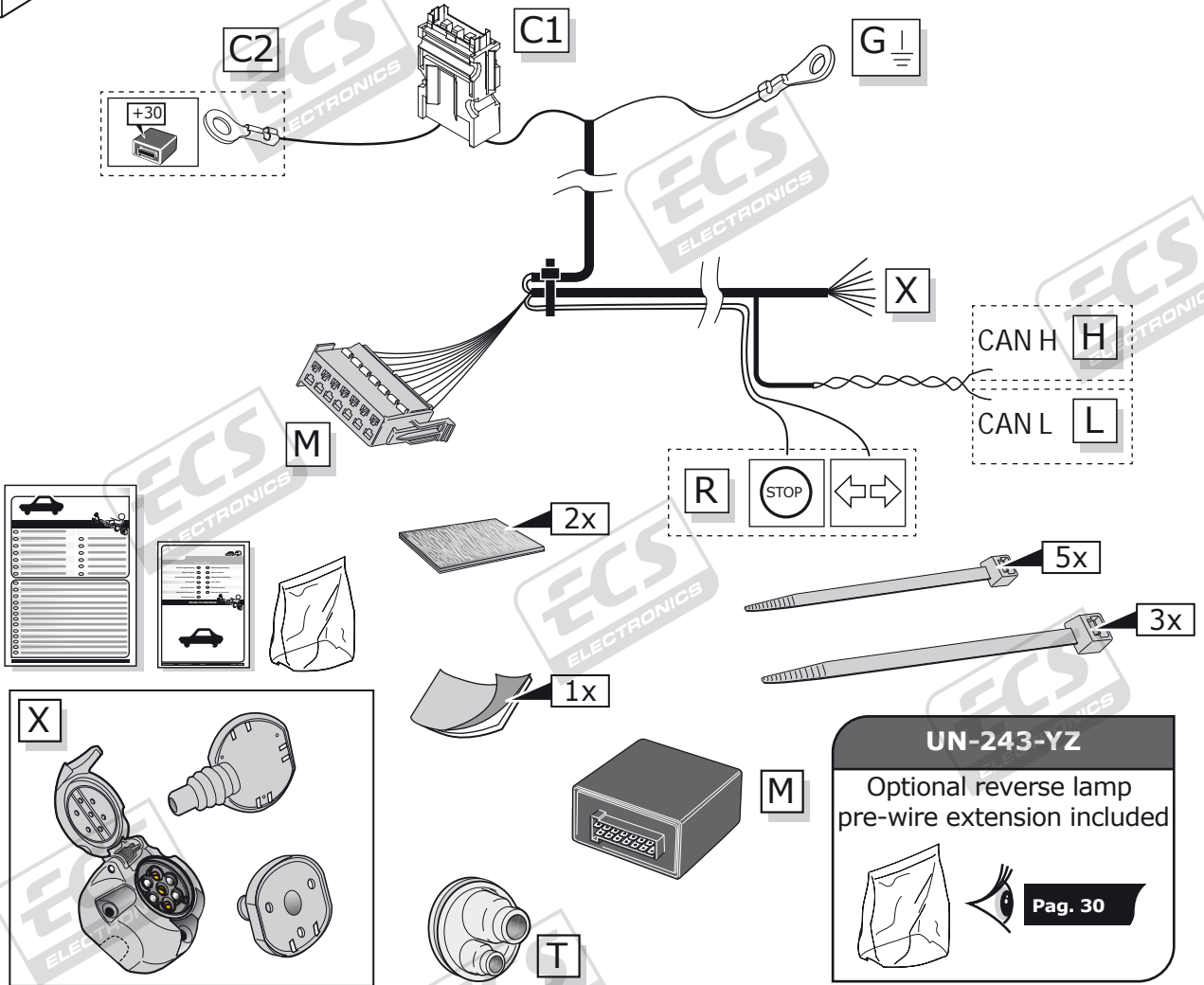
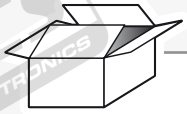
For RHD installation instruction please note the following:


For the BMW 5 (F10 and F11) series connect the CANbus on the off-side (Driver's side) of the dashboard.

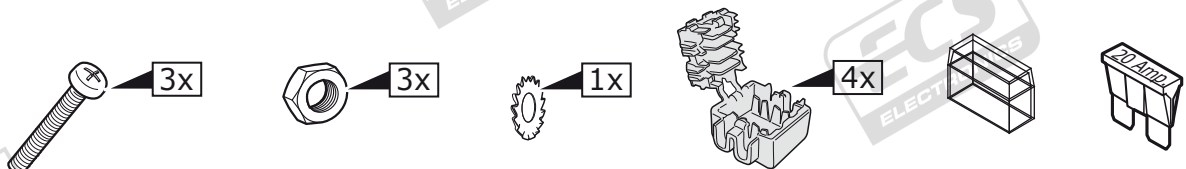
Note: There are CAN wires on the passenger side behind the glove box but these do not carry the towbar roadlighting signals.



# Part list



**UN-243-YZ**  
 Optional reverse lamp pre-wire extension included  
  
 Pag. 30



**INFO**

FIRST INQUIRE AT THE DEALER IF AN EXPANSION SET FOR A TOWING HOOK PLUS HEAT INSULATION (IN CONNECTION WITH COOLING) APPLIES TO YOUR VEHICLE.

**INFO**

**BMW 5 Series F10, F11  
BMW 7 Series F01, F02**



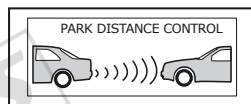
**Pag. 5**

**BMW X3 Series F25**



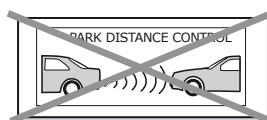
**Pag. 8**

**BMW 1 Series E81, E82, E87, E88  
BMW 3 Series E90, E91, E92, E93  
BMW 5 Series E60, E61, F07  
BMW 7 Series E65, E66  
BMW X1 Series E84  
BMW X5 Series E70  
BMW X6 Series E71**



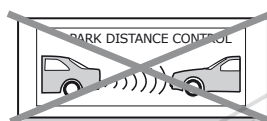
**Pag. 11**

**BMW 5 Series E60, E61, F07  
BMW 7 Series E65, E66  
BMW X1 Series E84  
BMW X5 Series E70  
BMW X6 Series E71**



**Pag. 14**

**BMW 1 Series E81, E82, E87, E88  
BMW 3 Series E90, E91, E92, E93**



**Pag. 17**

**BMW 1 Series F20, F21**



**Pag. 20**

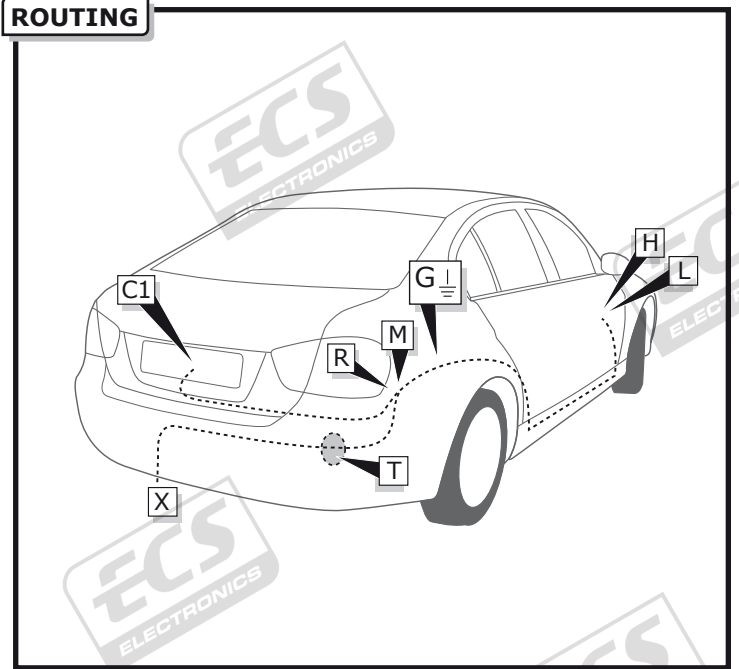
**BMW 3 Series F30, F31, F34**



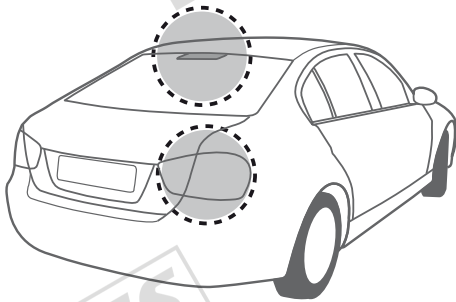
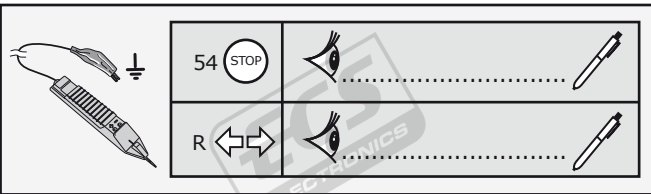
**Pag. 23**

# ROUTING

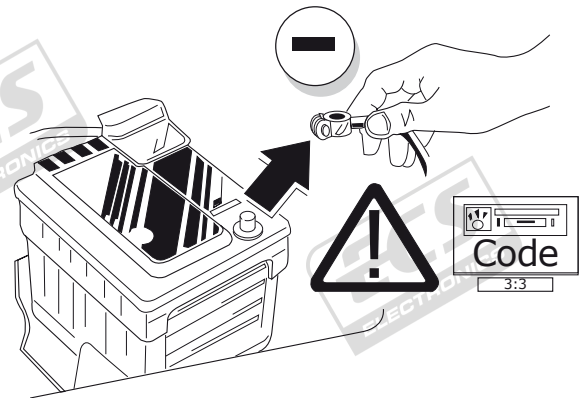
**BMW 5 Series F10, F11**  
**BMW 7 Series F01, F02**



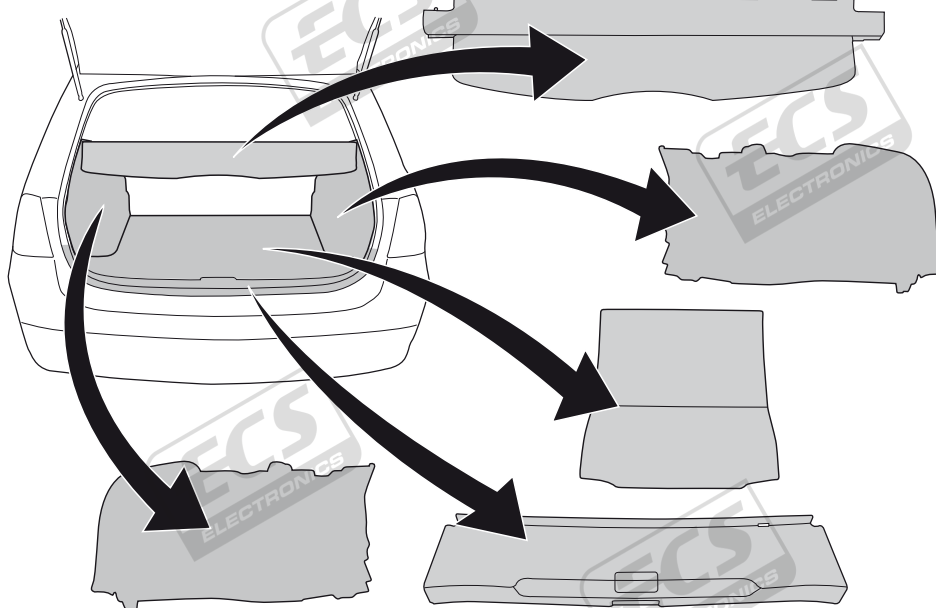
1

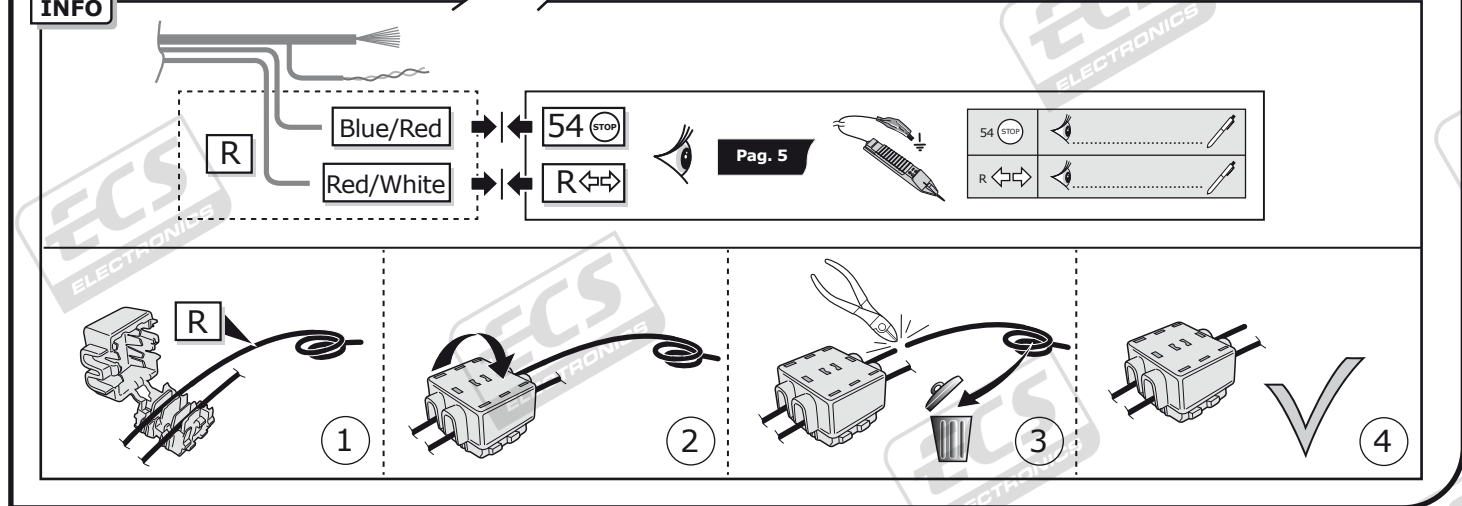
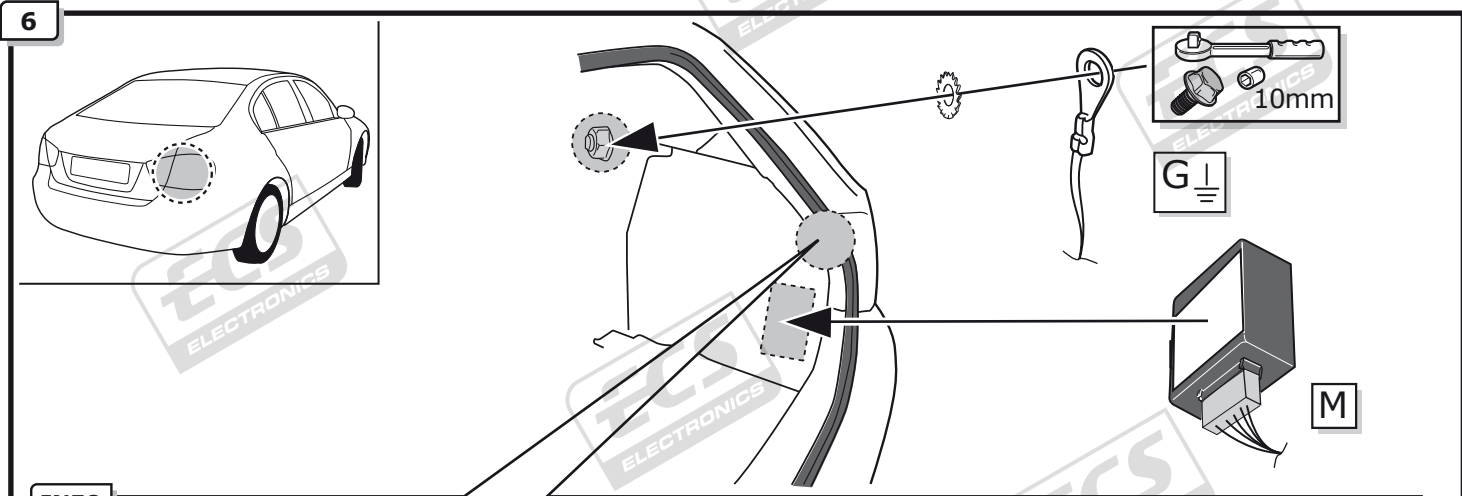
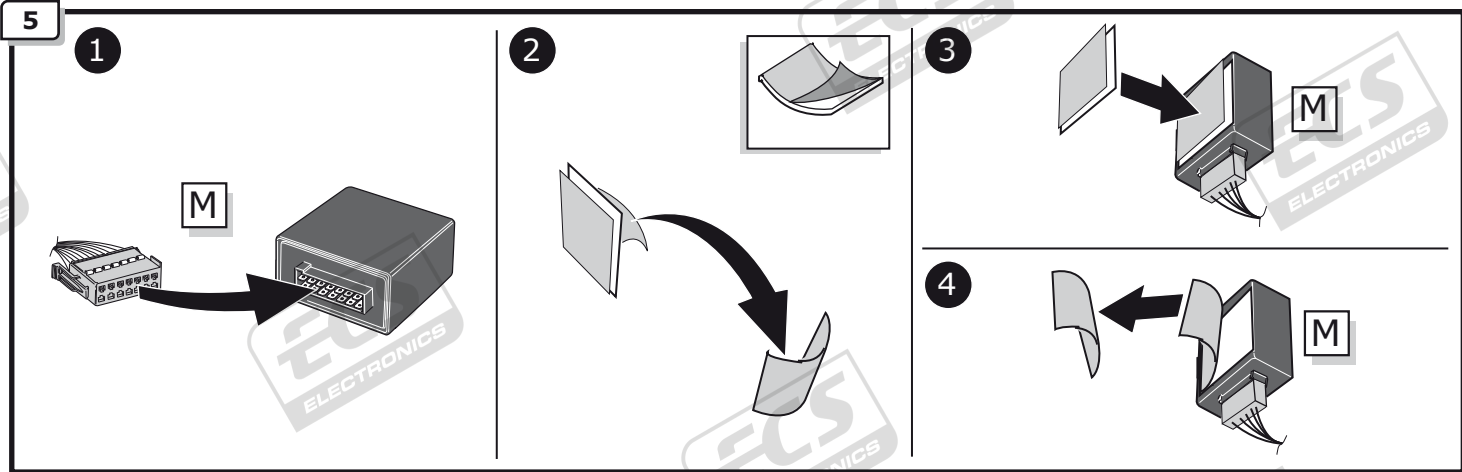
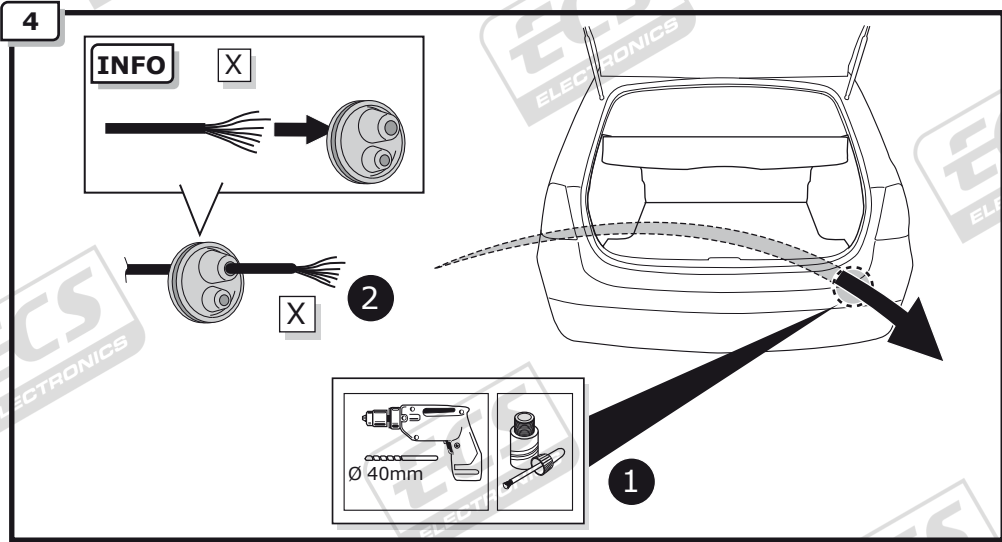


2

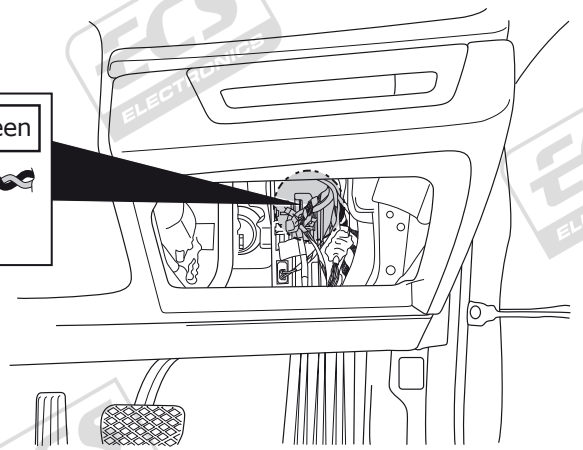
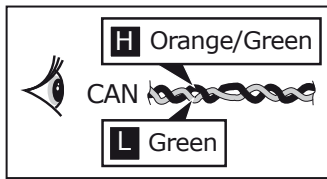
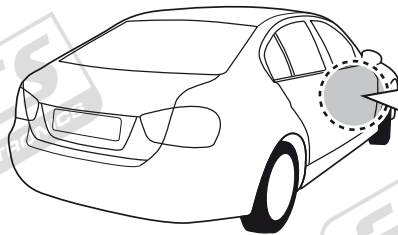


3

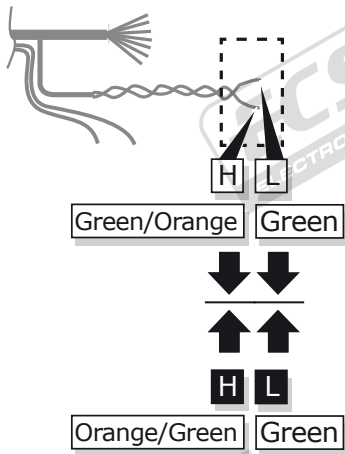




7



8



 H Green/Orange	 L Green	
 H Orange/Green	 L Green	
<b>INFO</b> 		

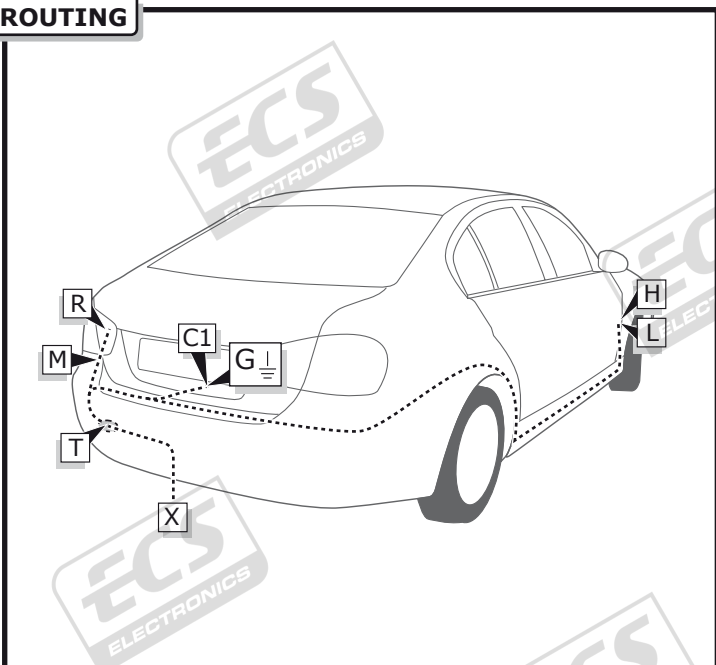
9



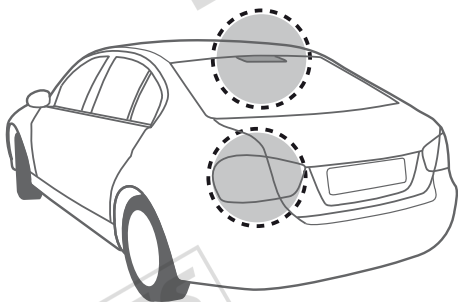
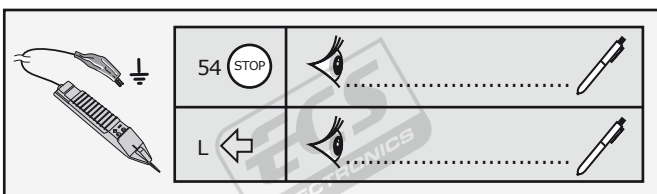
Pag. 26

# BMW X3 Series F25

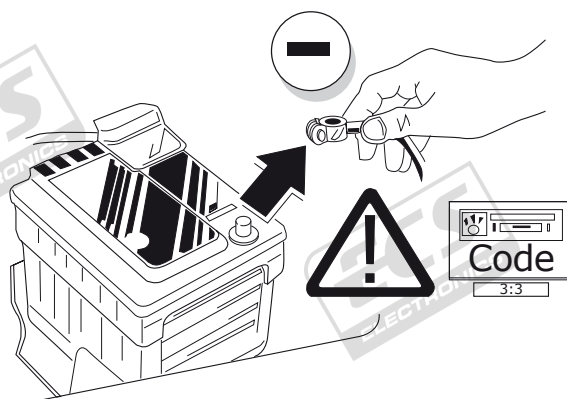
## ROUTING



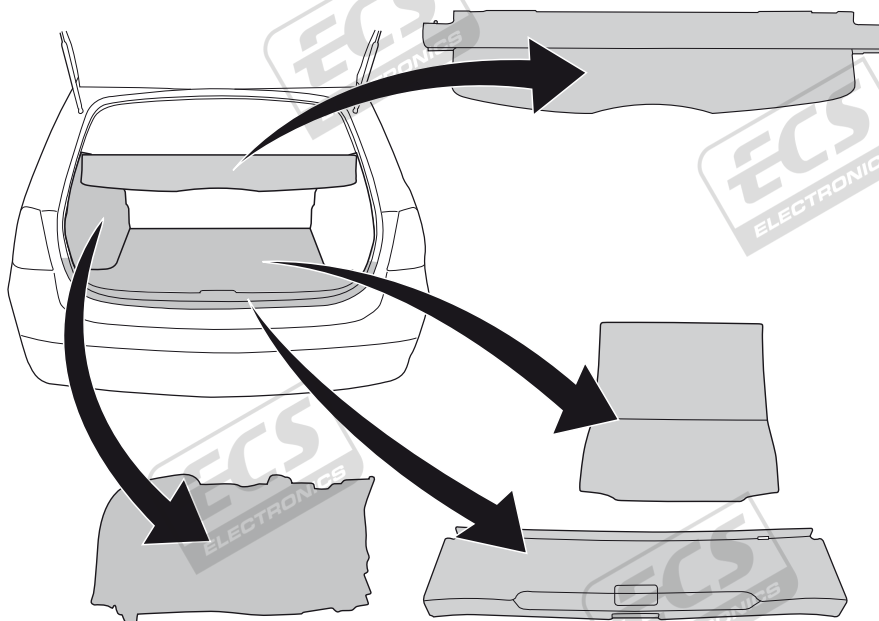
10



11

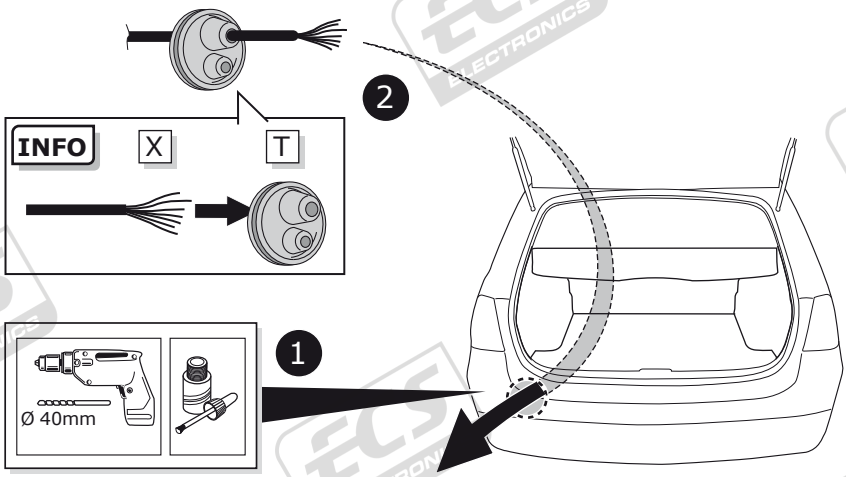


12





13



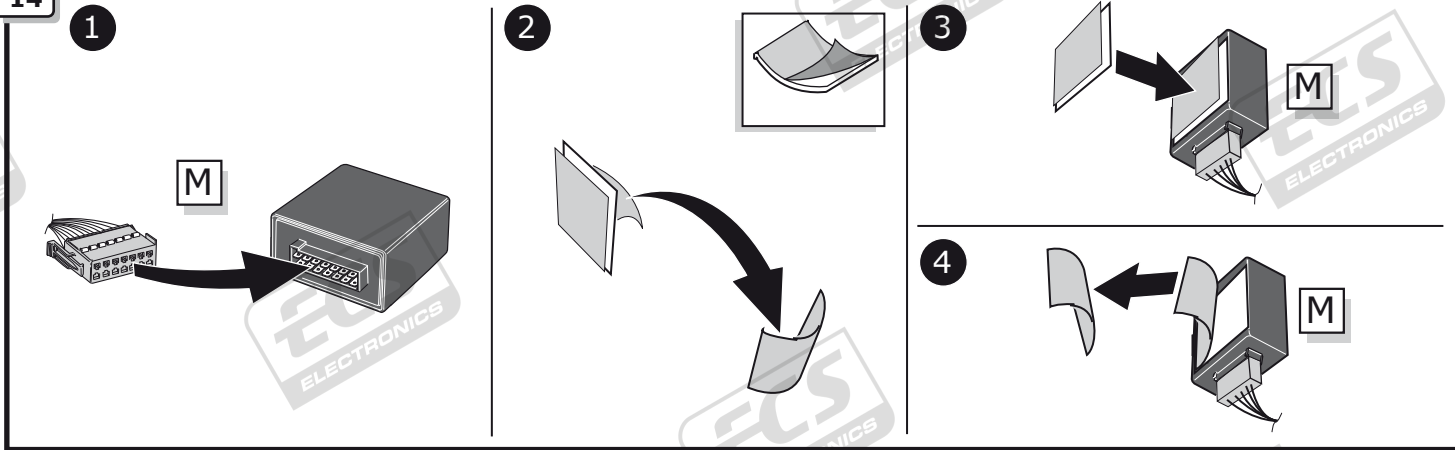
INFO

### SOCKET CONNECTION

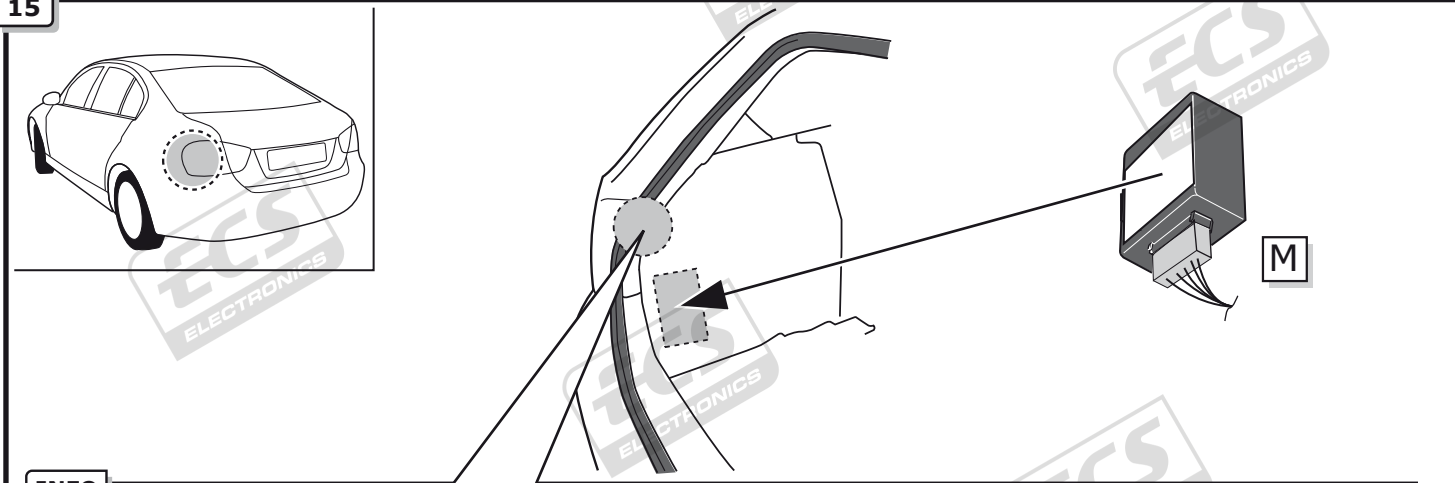


Pag. 28

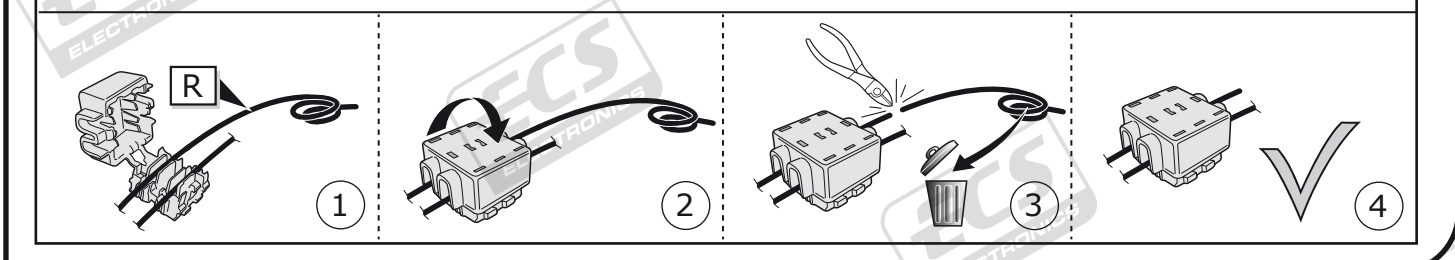
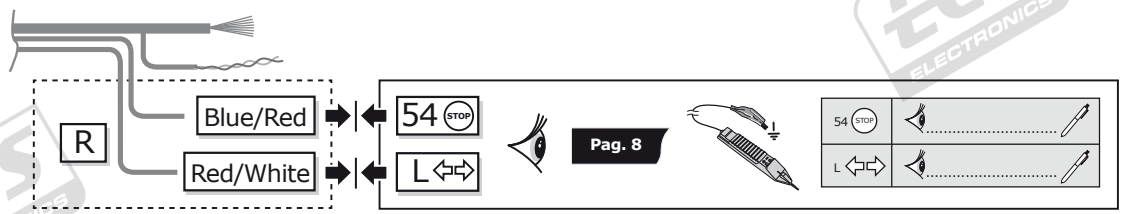
14



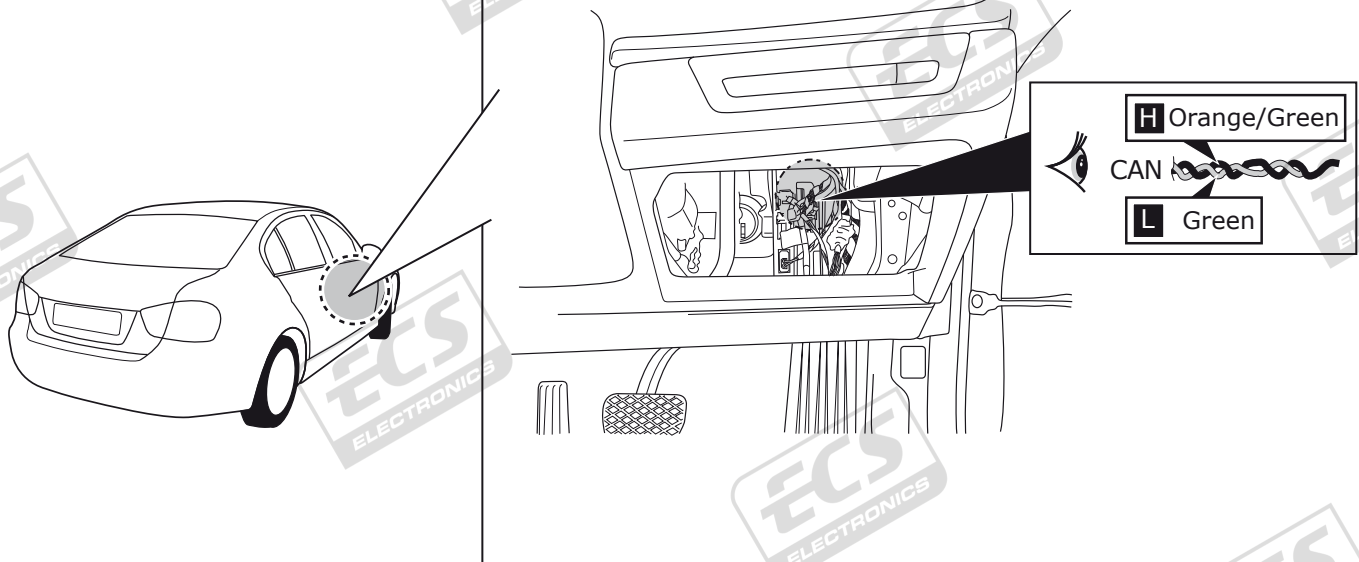
15



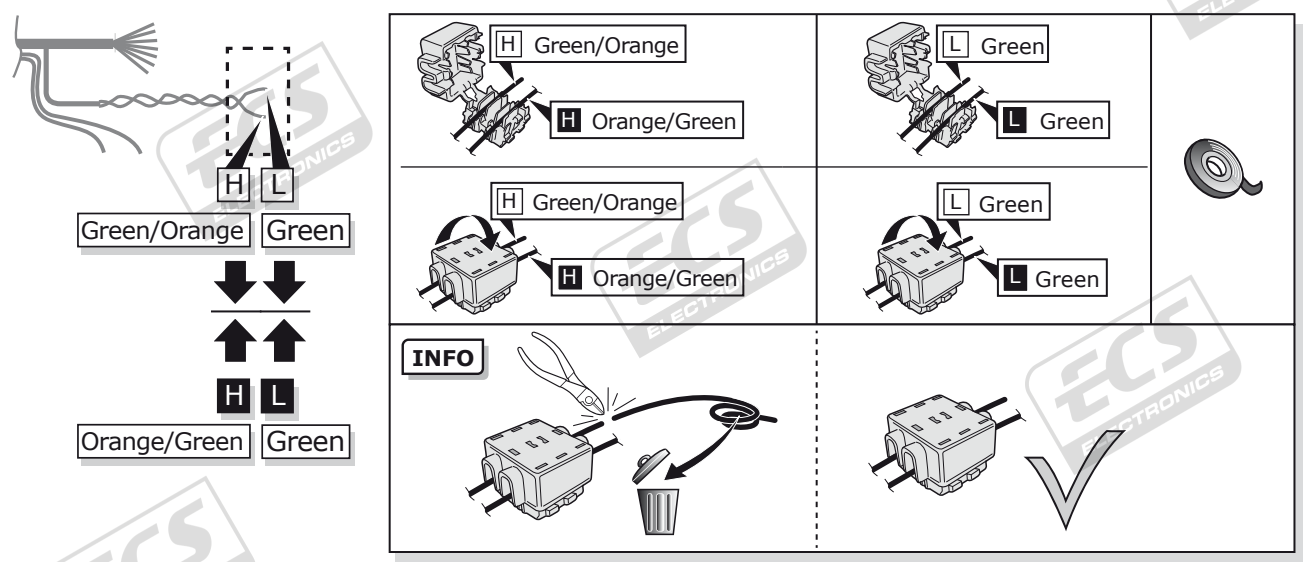
INFO



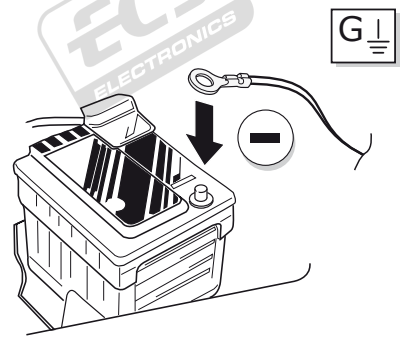
16



17



18

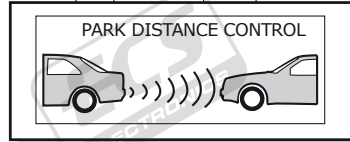
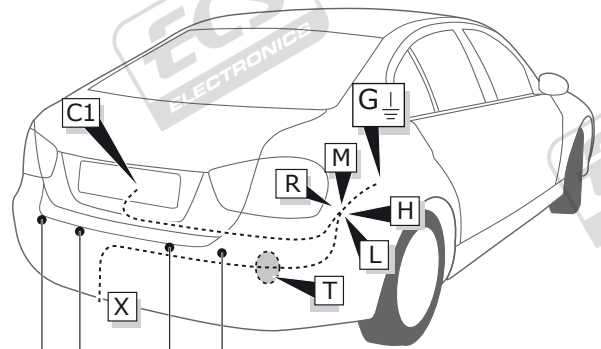


19

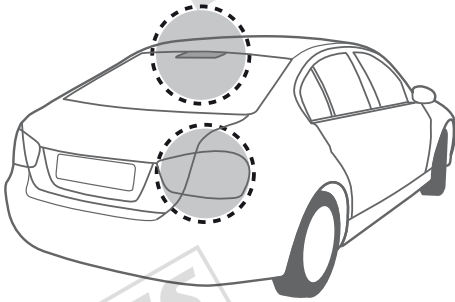
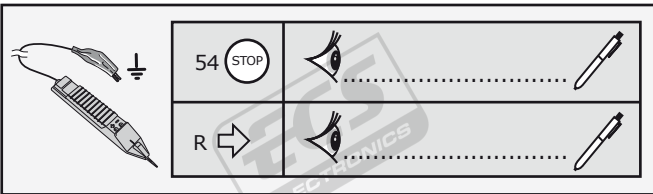


**BMW 1 Series E81, E82, E87, E88**  
**BMW 3 Series E90, E91, E92, E93**  
**BMW 5 Series E60, E61, F07**  
**BMW 7 Series E65, E66**  
**BMW X1 Series E84**  
**BMW X5 Series E70**  
**BMW X6 Series E71**

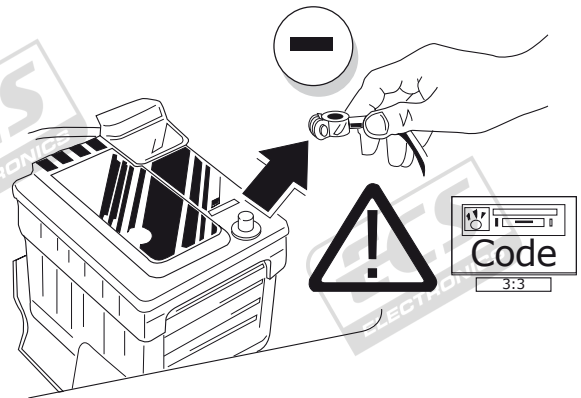
**ROUTING**



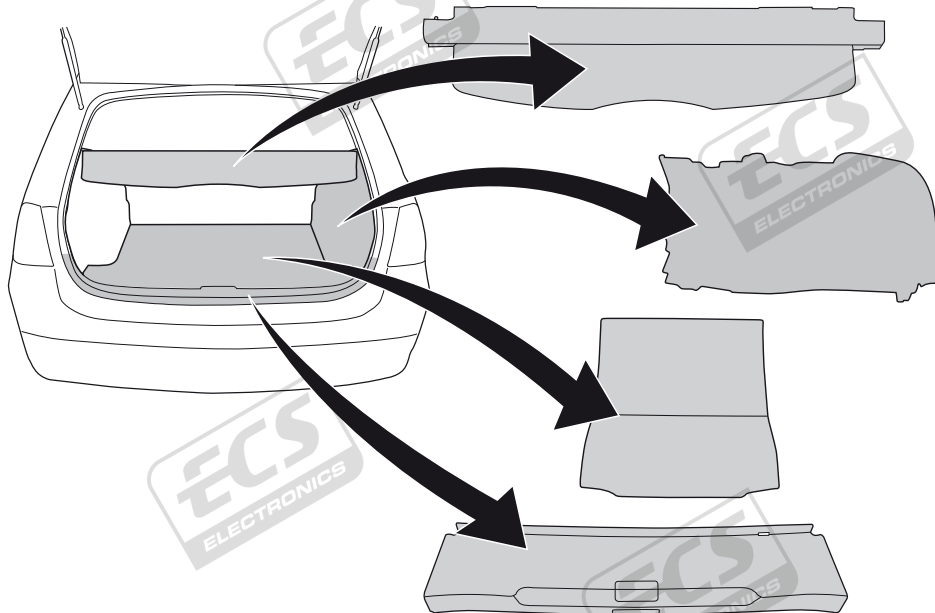
**20**



**21**



**22**



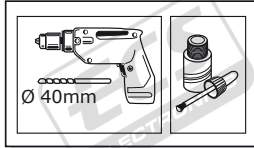
23

INFO

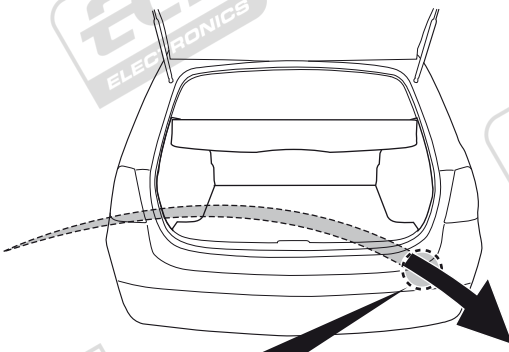
X



2



1



INFO

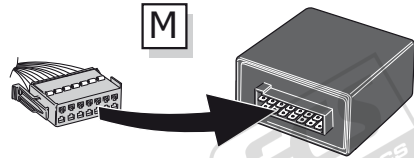
SOCKET CONNECTION



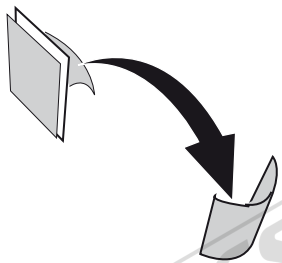
Pag. 28

24

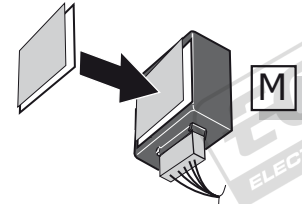
1



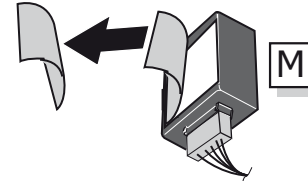
2



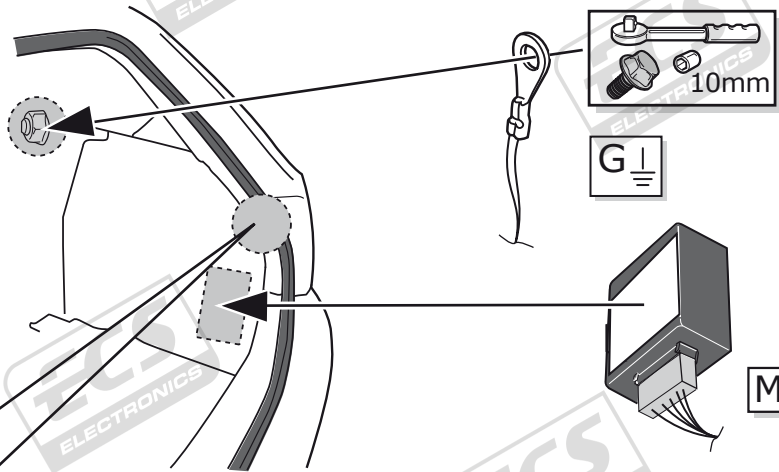
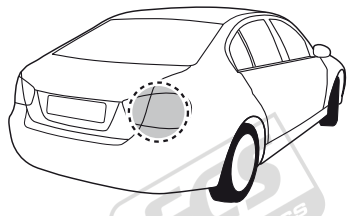
3



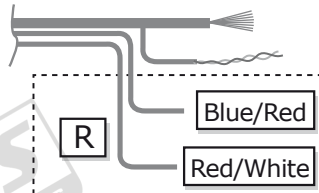
4



25



INFO

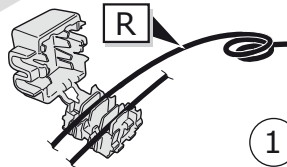
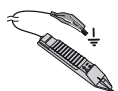


Blue/Red  
Red/White

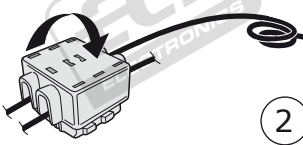
54 STOP  
R ↔



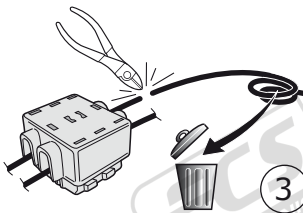
Pag. 11



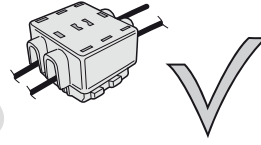
1



2



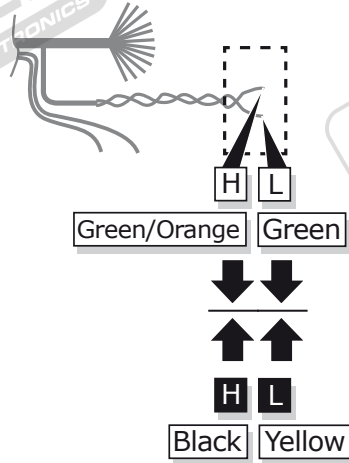
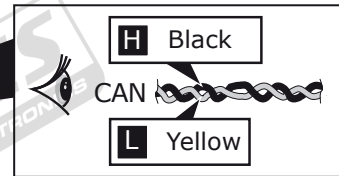
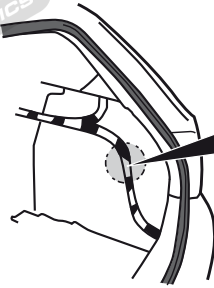
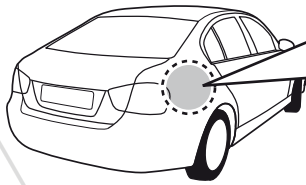
3



4

26

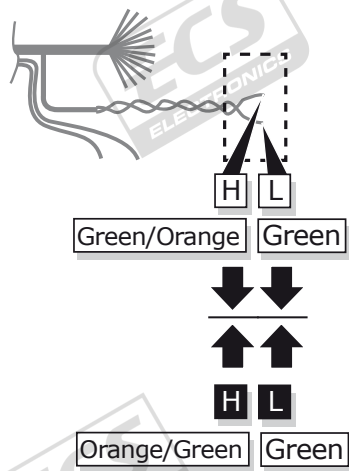
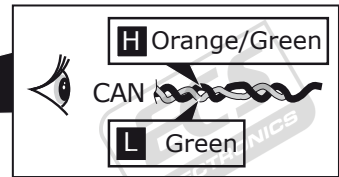
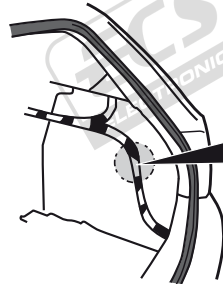
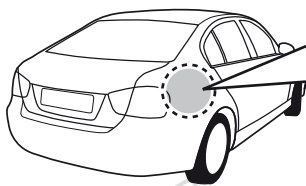
OPTION 1: E60 / E61



 <b>H</b> Green/Orange	 <b>L</b> Green	
 <b>H</b> Black	 <b>L</b> Yellow	
 <b>H</b> Green/Orange	 <b>L</b> Green	
 <b>H</b> Black	 <b>L</b> Yellow	
<b>INFO</b>		

27

OPTION 2: Other models



 <b>H</b> Green/Orange	 <b>L</b> Green	
 <b>H</b> Orange/Green	 <b>L</b> Green	
 <b>H</b> Green/Orange	 <b>L</b> Green	
 <b>H</b> Orange/Green	 <b>L</b> Green	
<b>INFO</b>		

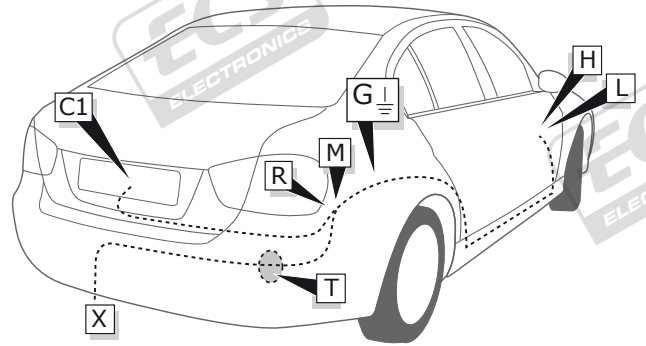
28



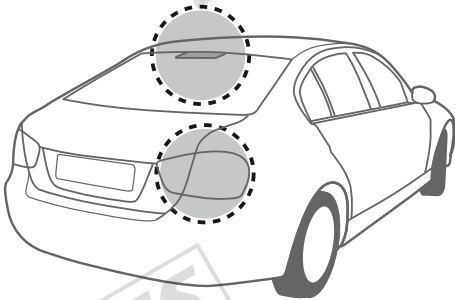
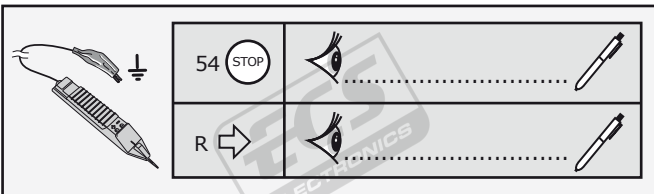
Pag. 26

**BMW 5 Series E60, E61, F07**  
**BMW 7 Series E65, E66**  
**BMW X1 Series E84**  
**BMW X5 Series E70**  
**BMW X6 Series E71**

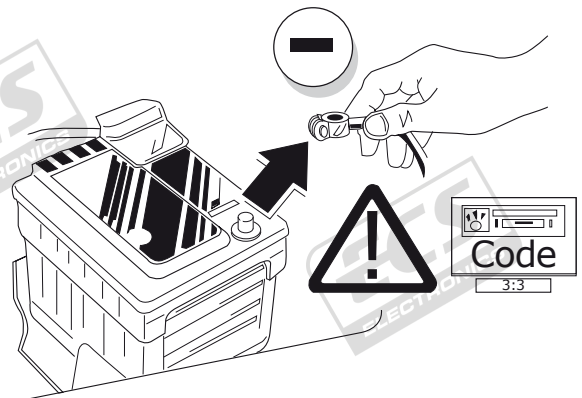
**ROUTING**



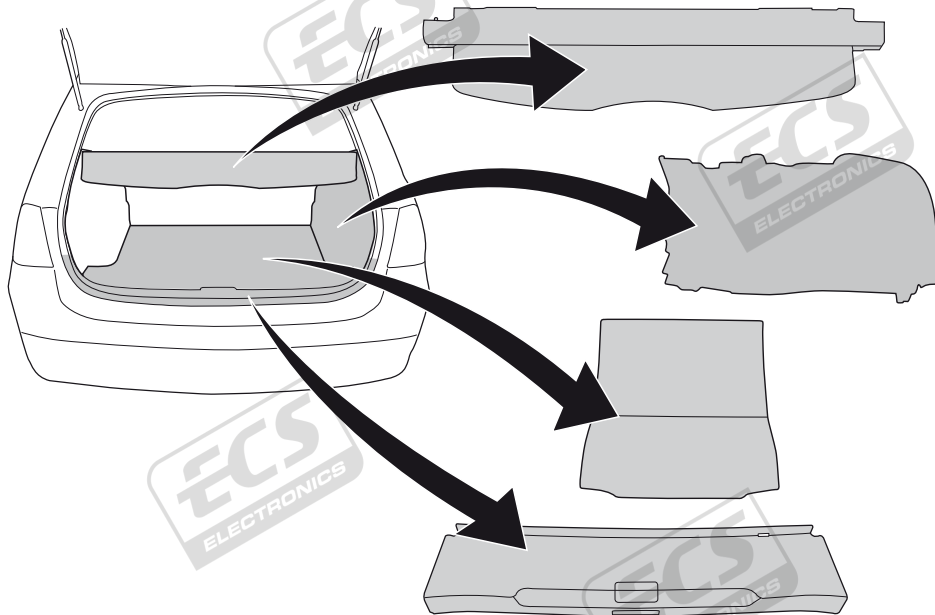
**29**



**30**



**31**



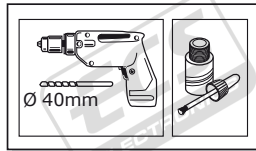
32

INFO

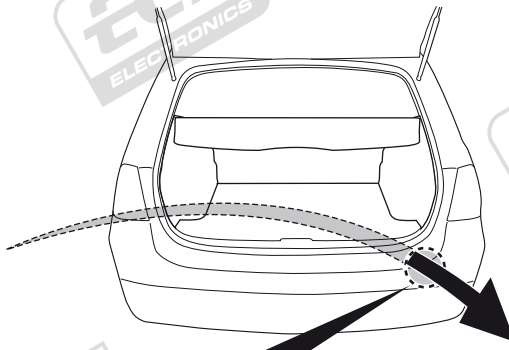
X



2



1



INFO

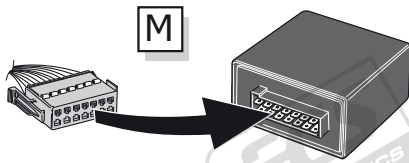
SOCKET CONNECTION



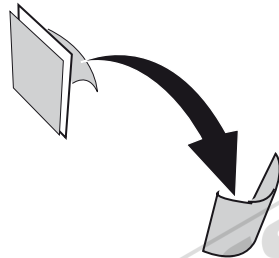
Pag. 28

33

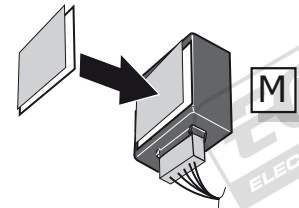
1



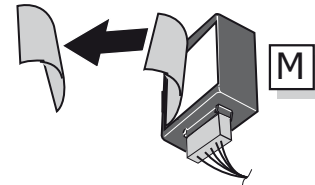
2



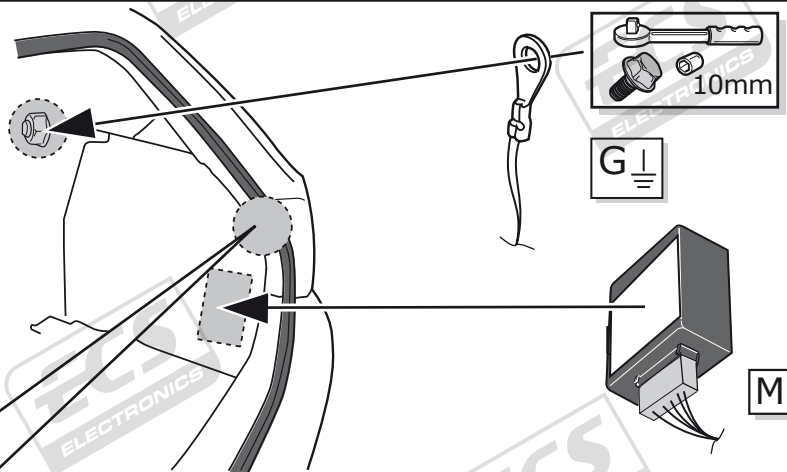
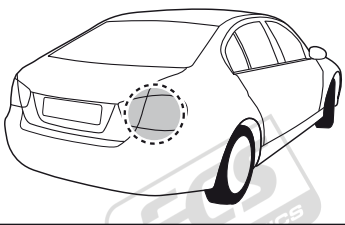
3



4



34



INFO

R

Blue/Red

Red/White

54 STOP

R ↔



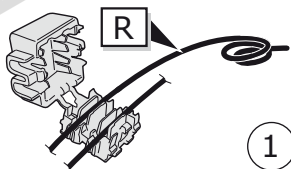
Pag. 14



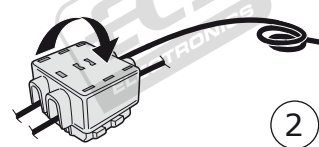
54 STOP

R ↔

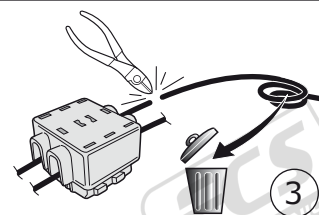
R ↔



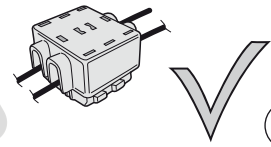
1



2



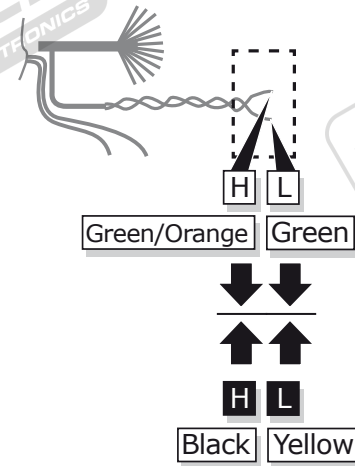
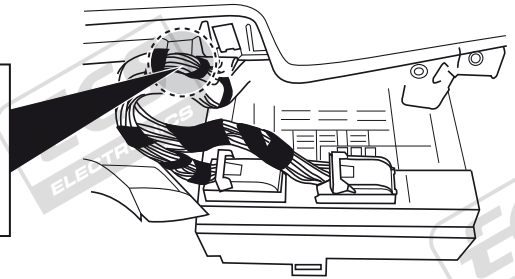
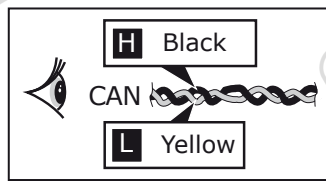
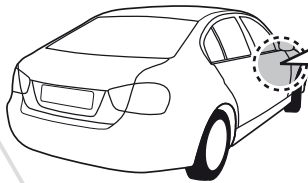
3



4

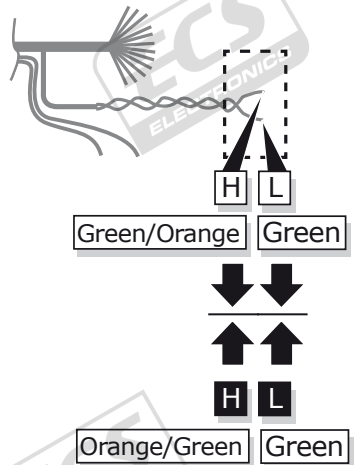
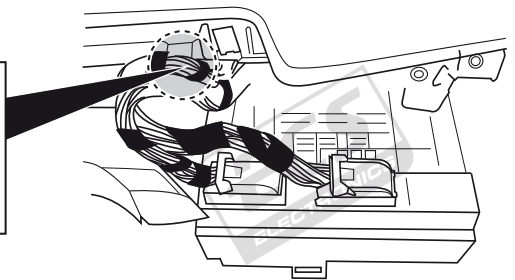
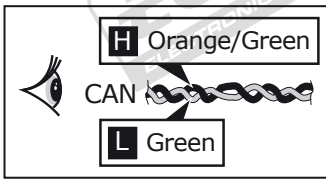
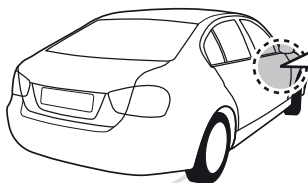
35

OPTION 1: E60 / E61




36

OPTION 2: Other models




37

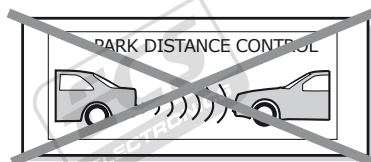
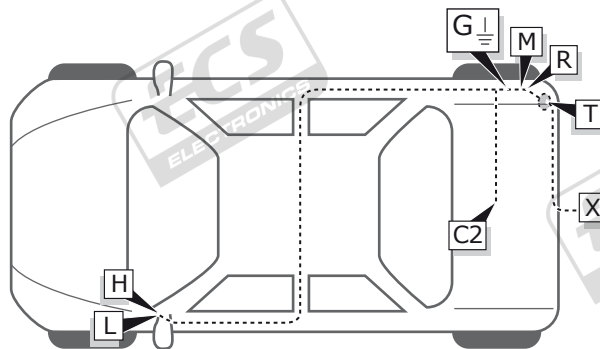


Pag. 26

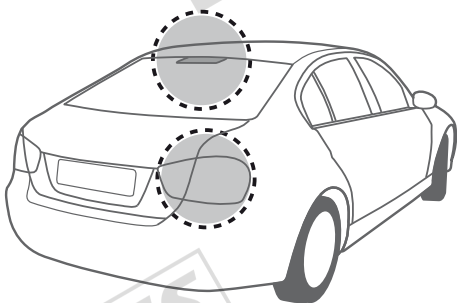
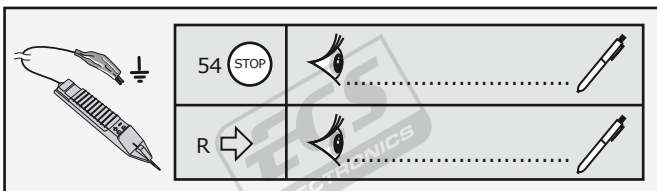


**BMW 1 Series E81, E82, E87, E88**  
**BMW 3 Series E90, E91, E92, E93**

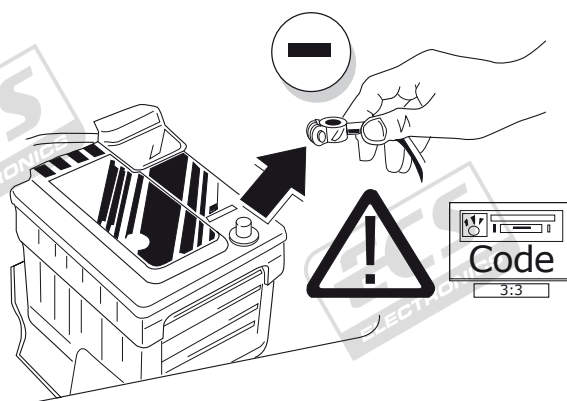
**ROUTING**



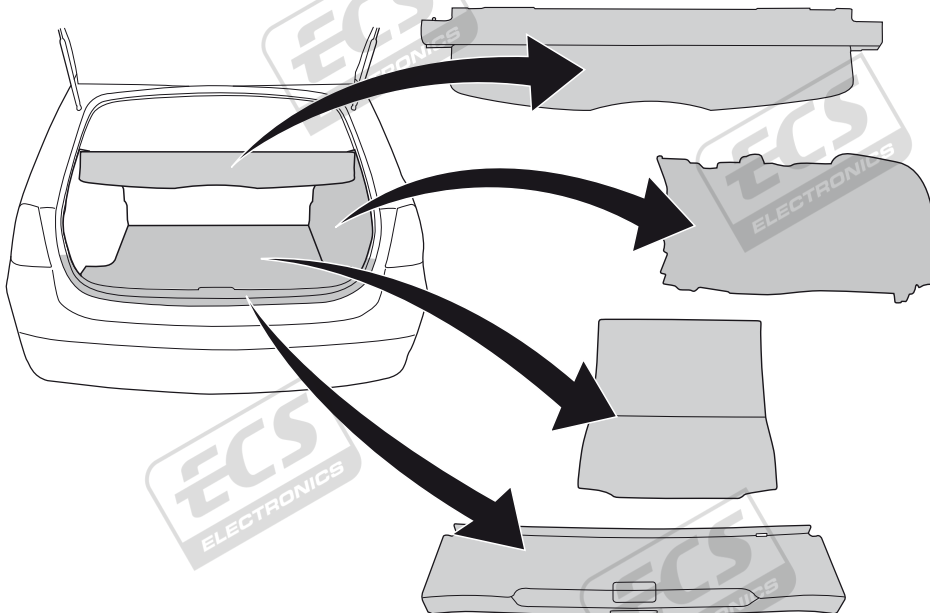
**38**



**39**



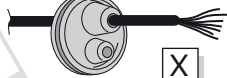
**40**



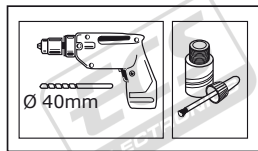
41

INFO

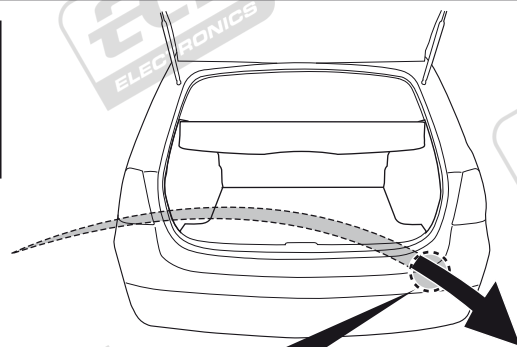
X



2



1



INFO

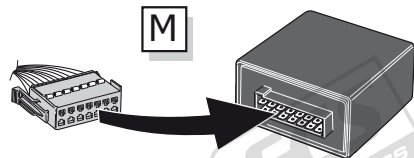
SOCKET CONNECTION



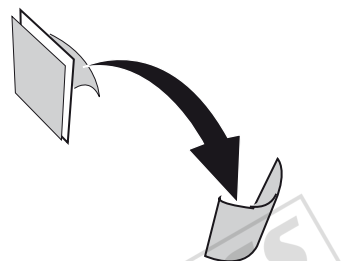
Pag. 28

42

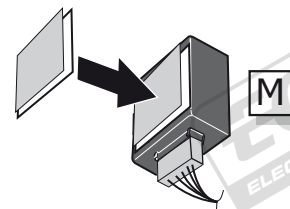
1



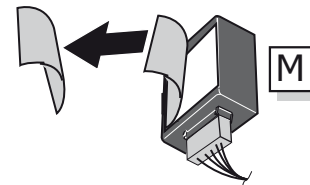
2



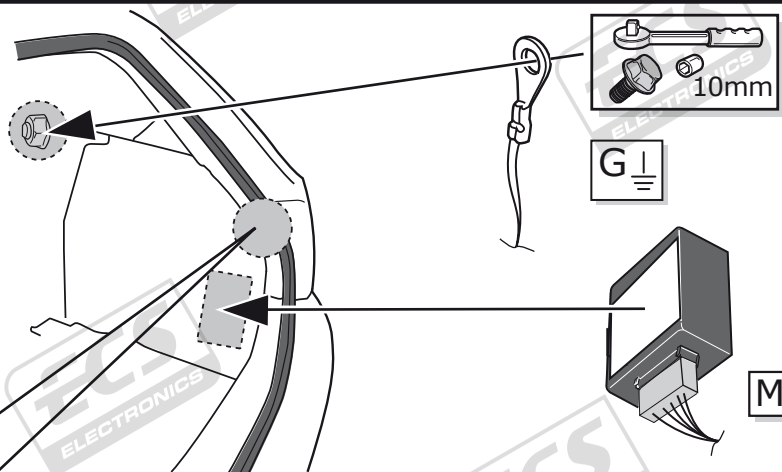
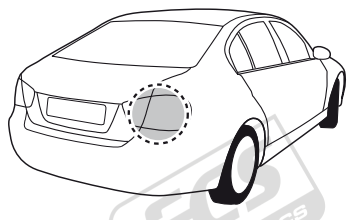
3



4



43



INFO

R

Blue/Red

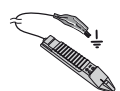
Red/White

54 STOP

R ↔



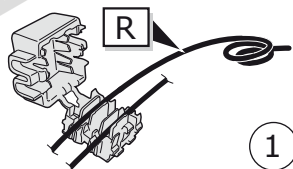
Pag. 17



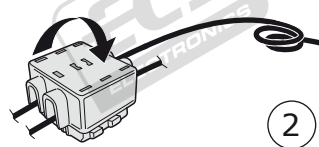
54 STOP

R ↔

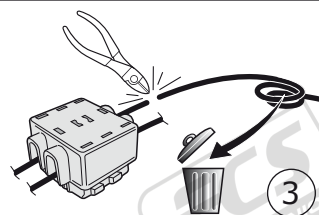
R ↔



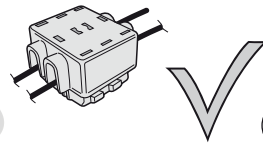
1



2

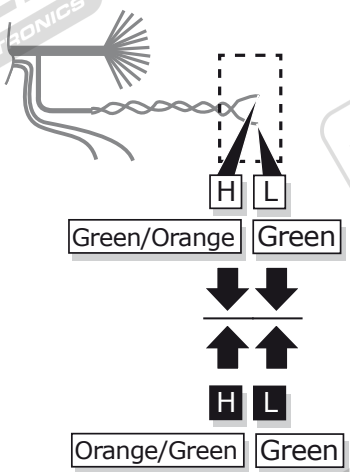
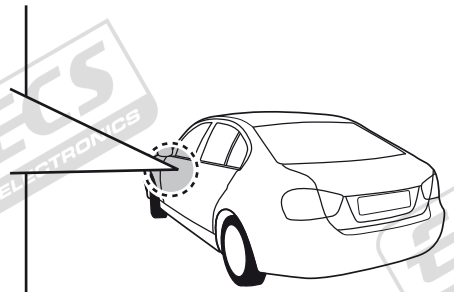
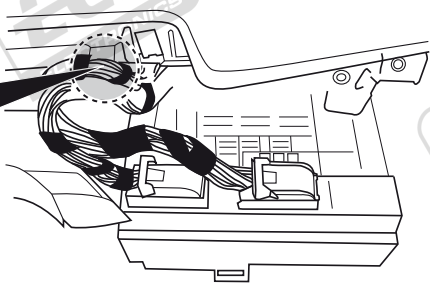
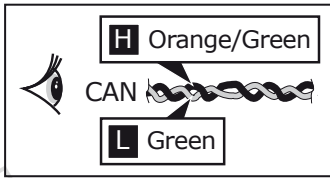


3



4

44



<p><b>H</b> Green/Orange <b>L</b> Orange/Green</p>	<p><b>L</b> Green <b>L</b> Green</p>	
<p><b>H</b> Green/Orange <b>L</b> Orange/Green</p>	<p><b>L</b> Green <b>L</b> Green</p>	
<p><b>INFO</b></p>		

45



Pag. 26

# BMW 1 Series F20, F21

## INFO



without PDC cut off function

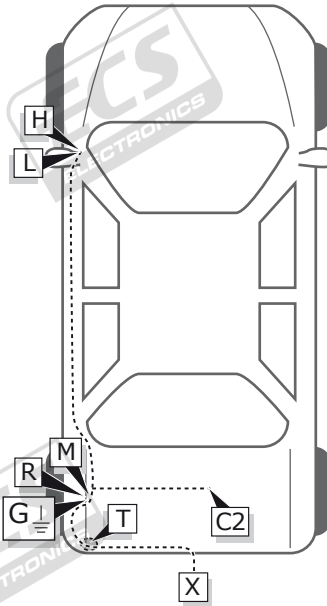
PARK DISTANCE CONTROL



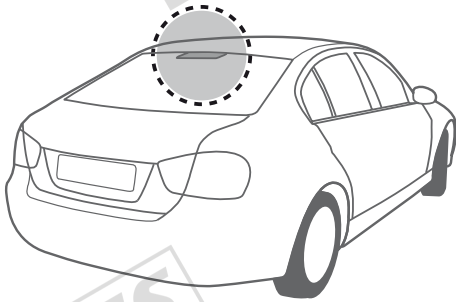
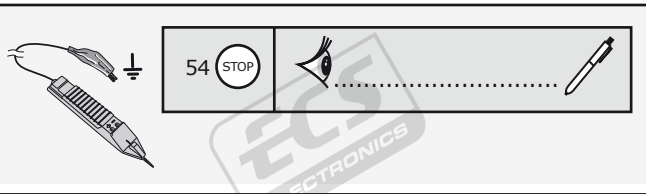
PARK DISTANCE CONTROL



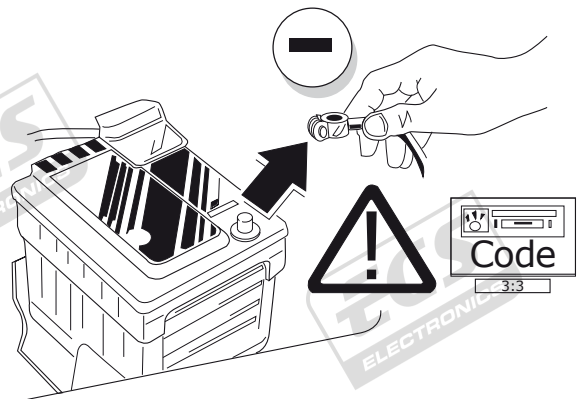
## ROUTING



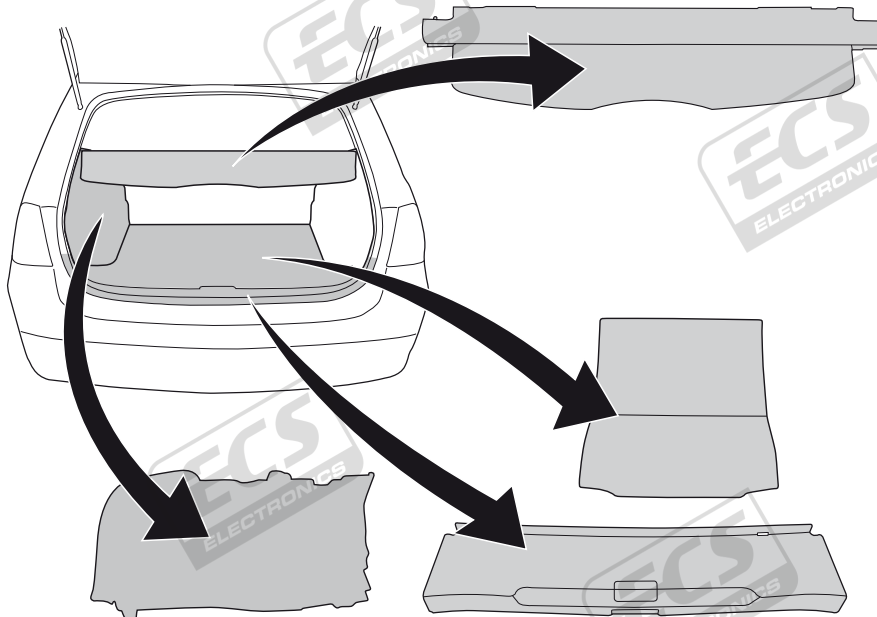
46



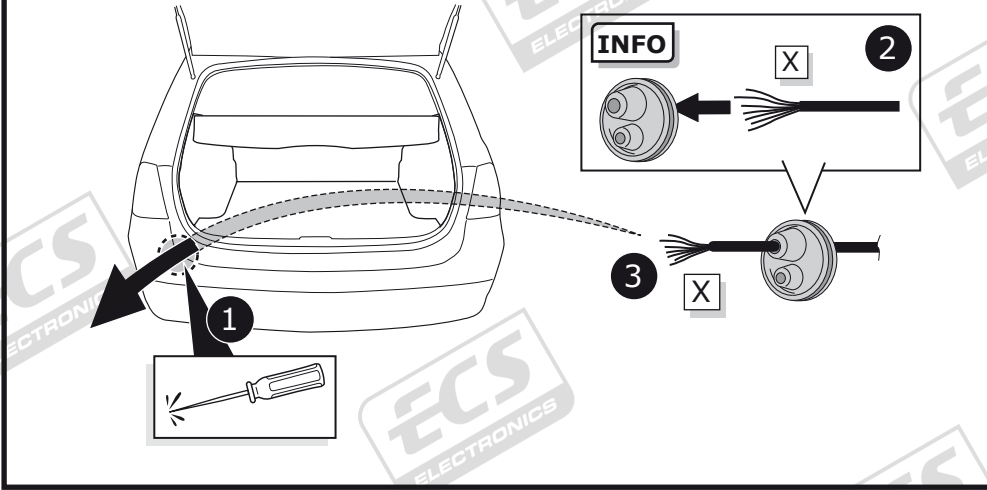
47



48



49



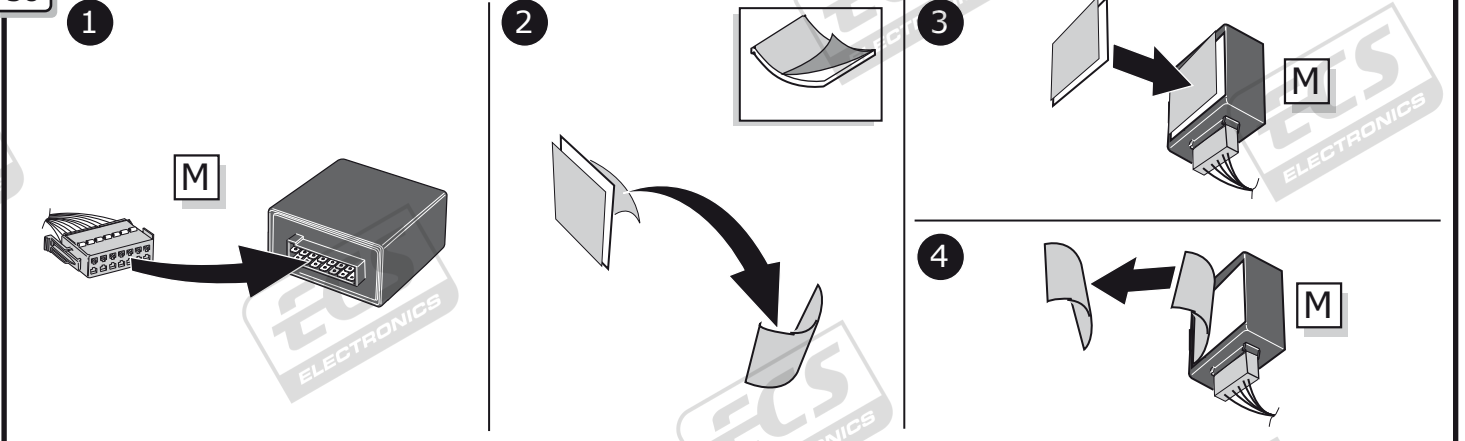
**INFO**

SOCKET CONNECTION

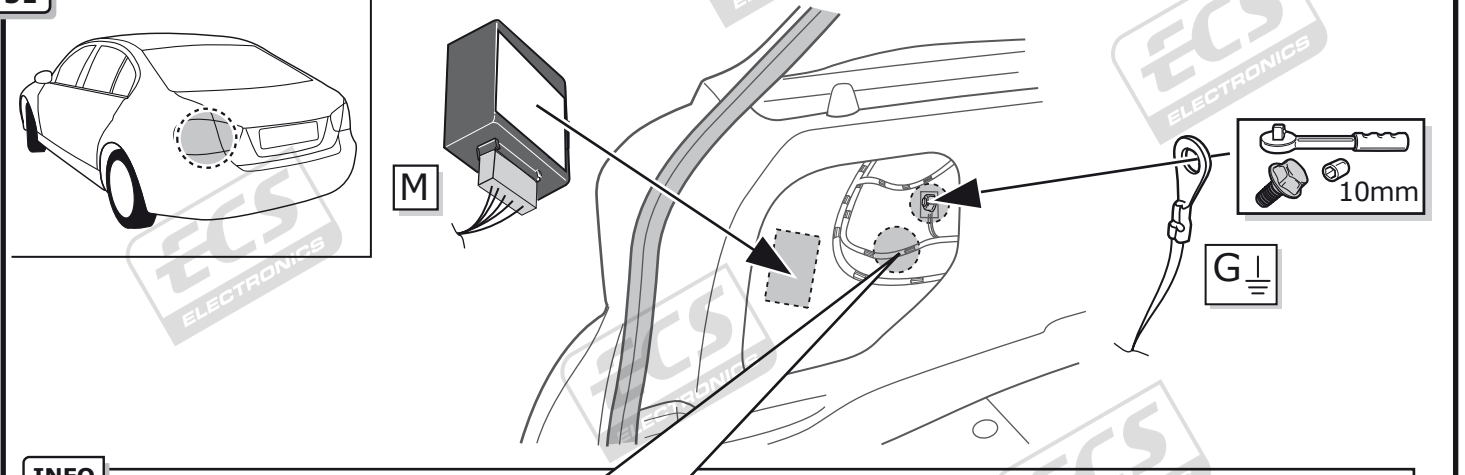


Pag. 28

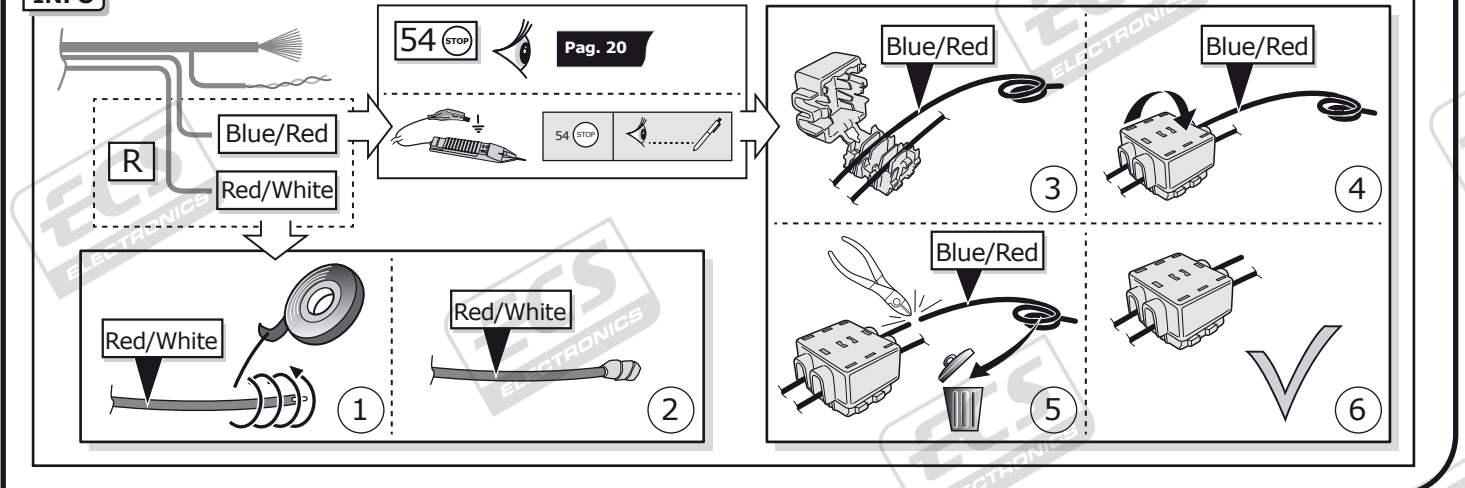
50



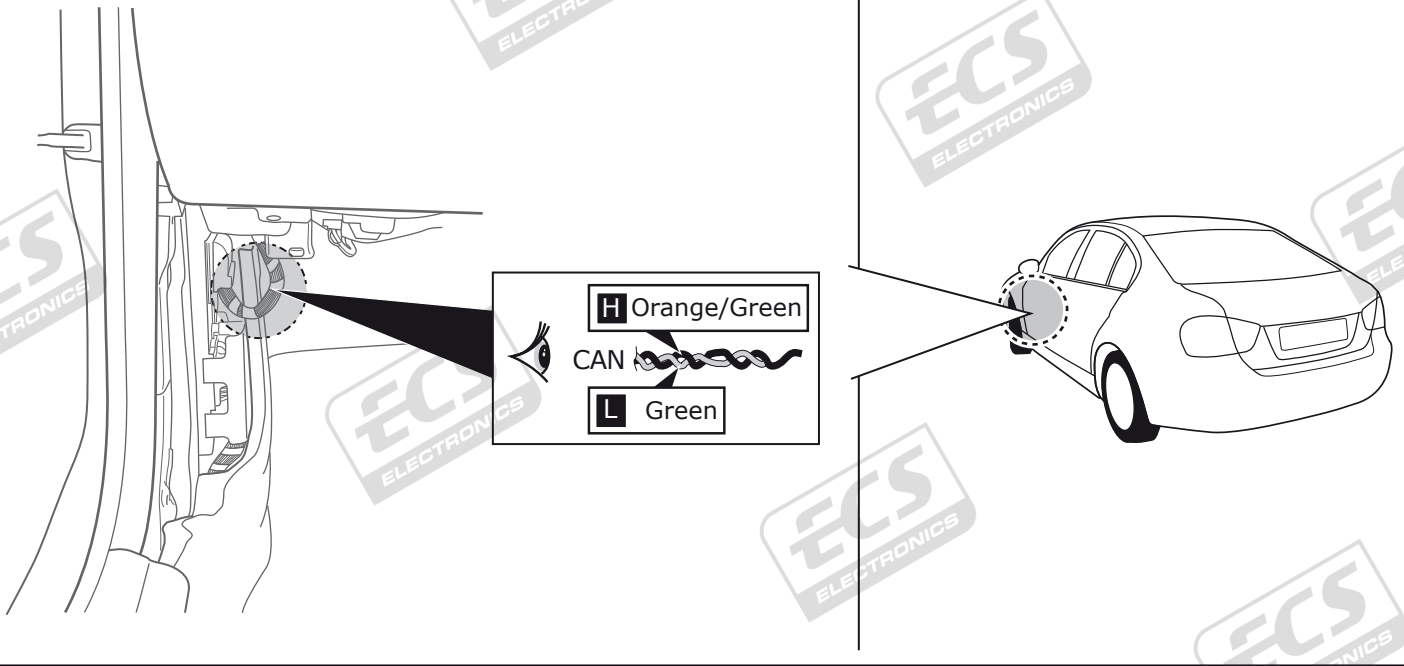
51



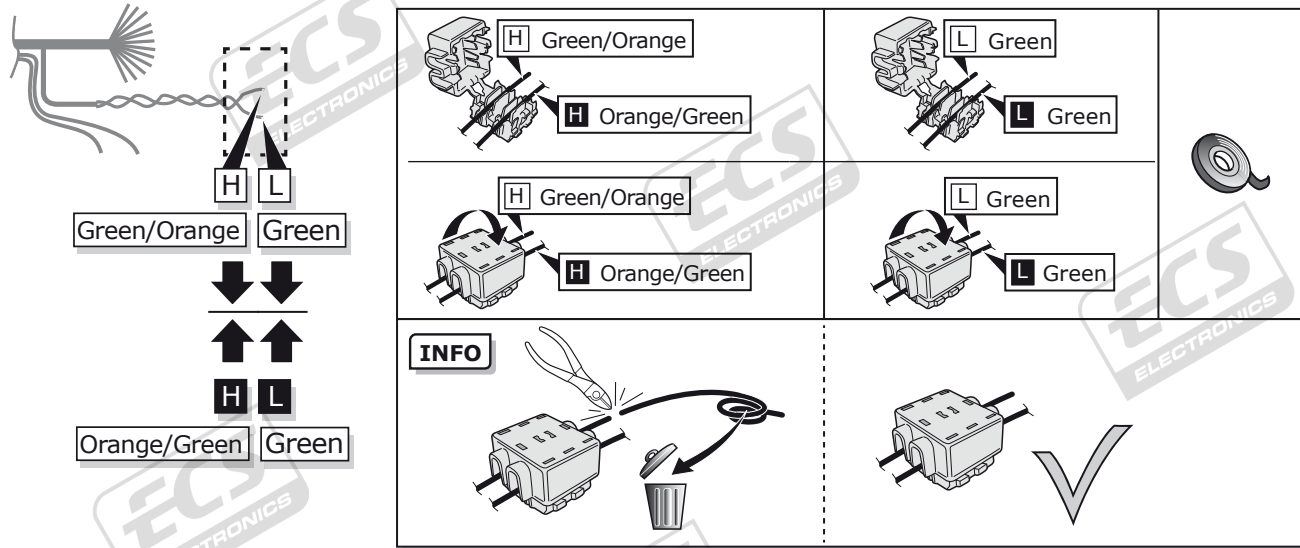
**INFO**



52



53

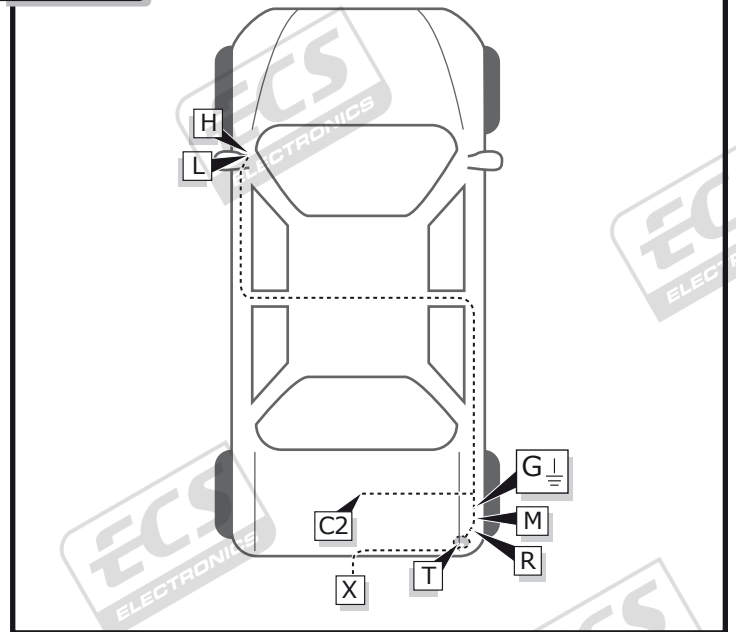


54

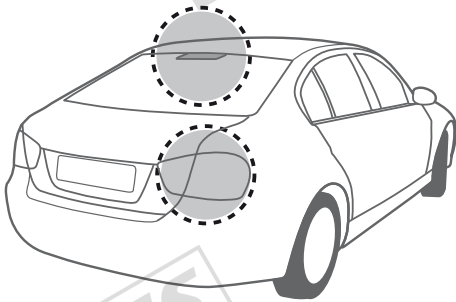
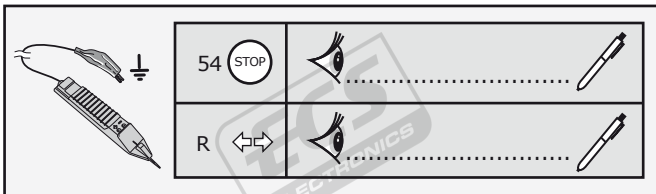


# BMW 3 Series F30, F31, F34

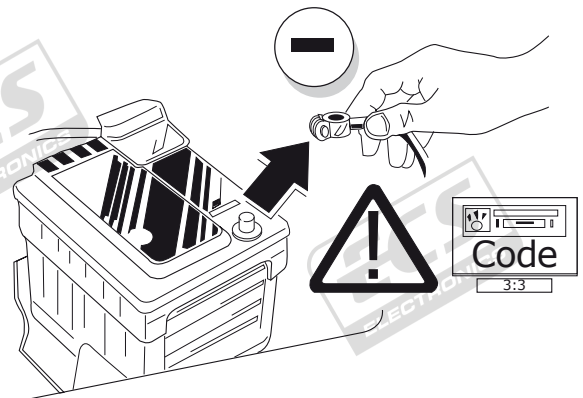
## ROUTING



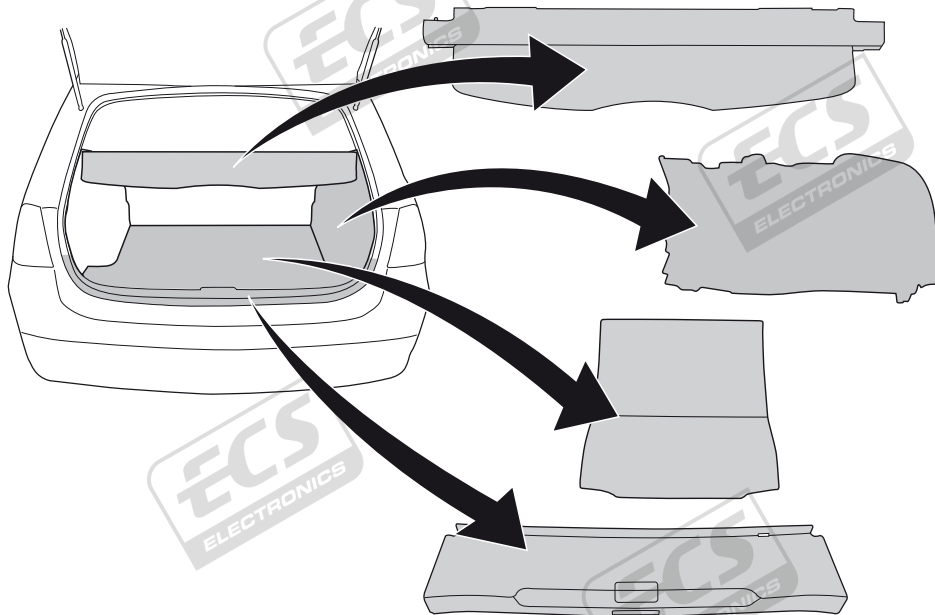
55



56



57



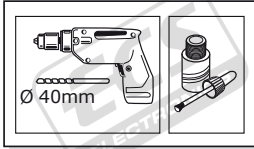
58

INFO

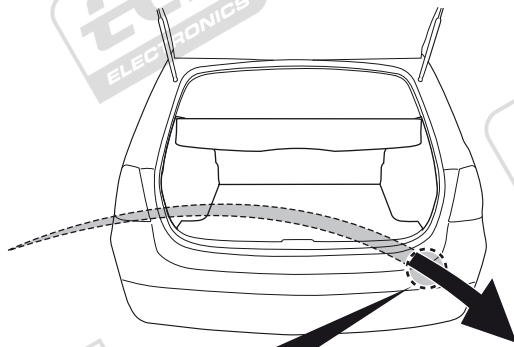
X



2



1



INFO

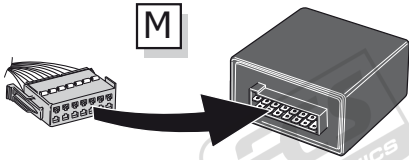
SOCKET CONNECTION



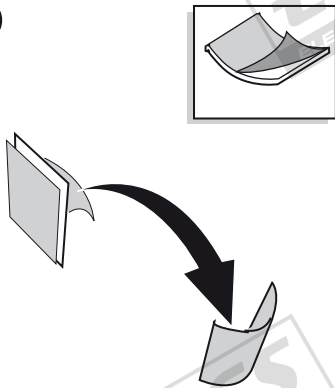
Pag. 28

59

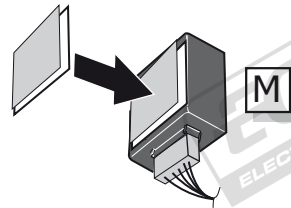
1



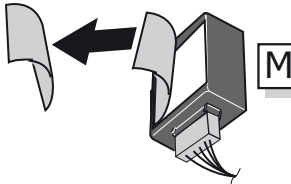
2



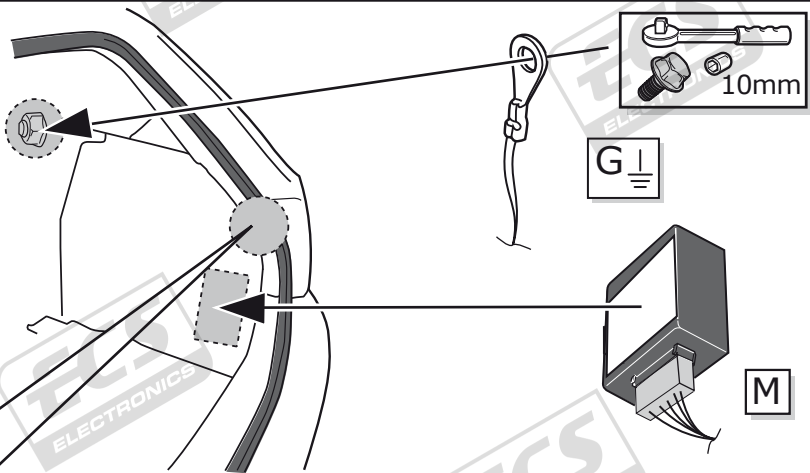
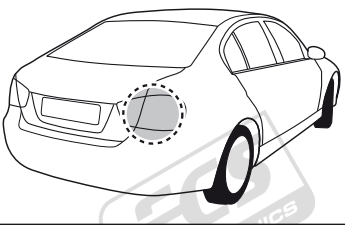
3



4



60



INFO

R

Blue/Red

Red/White

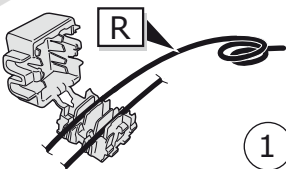
54 STOP

R ↔

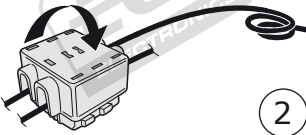
Pag. 23

54 STOP

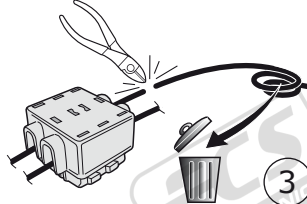
R ↔



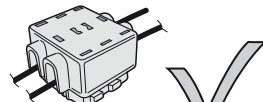
1



2



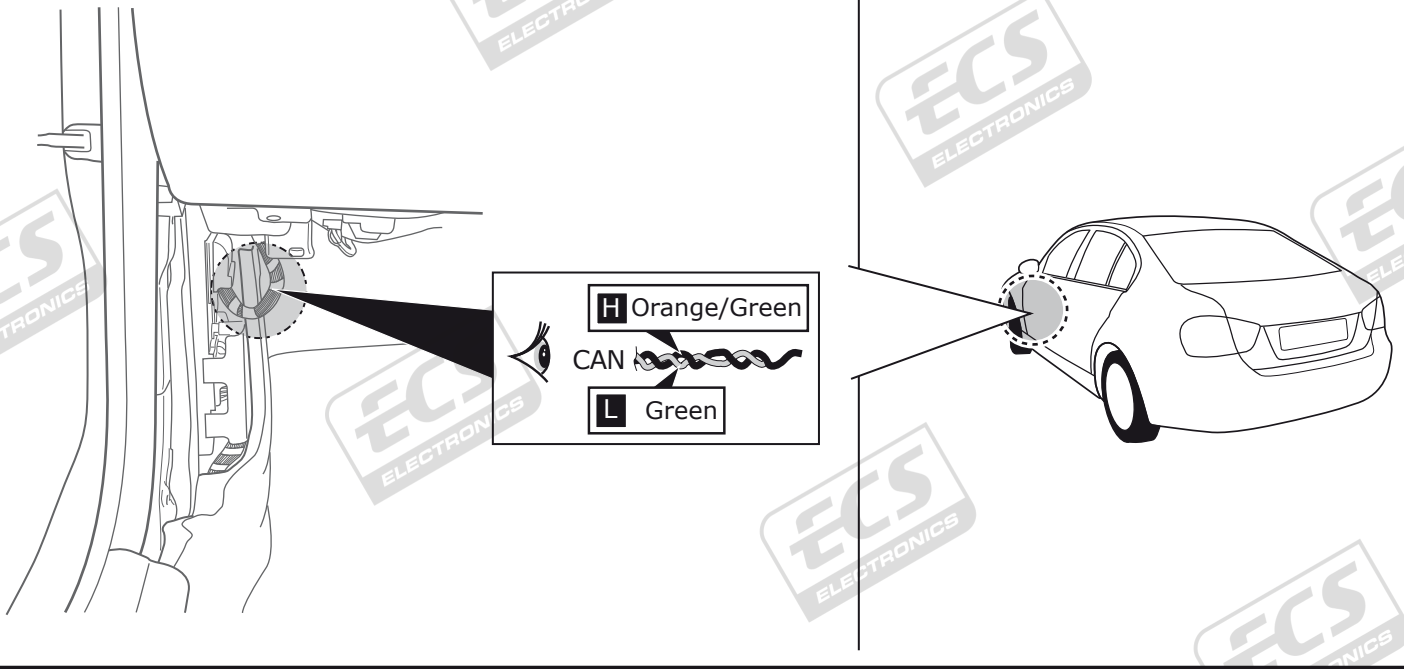
3



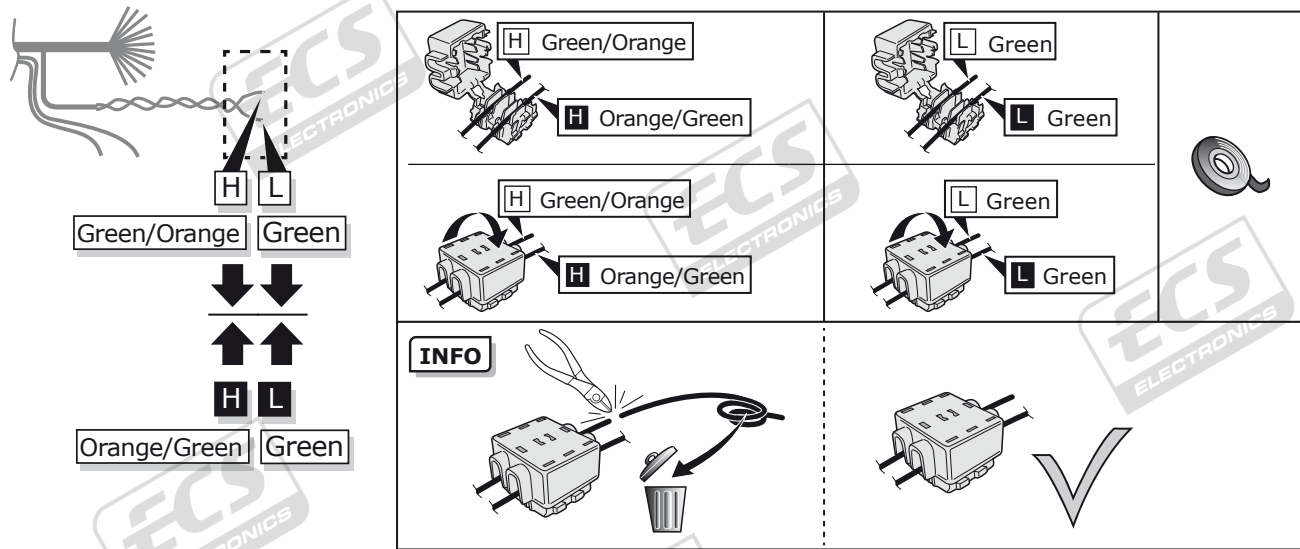
4



61



62

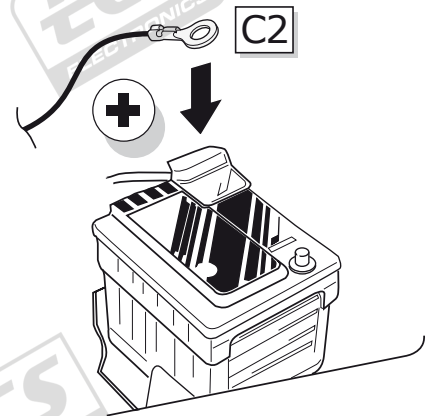
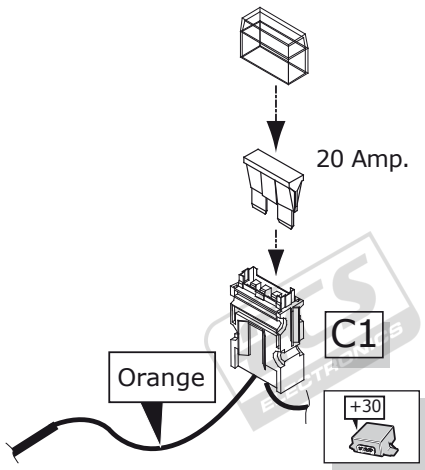


63

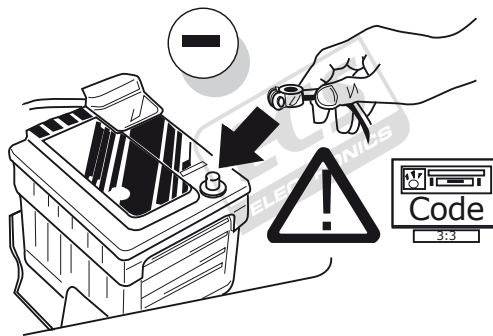


Pag. 26

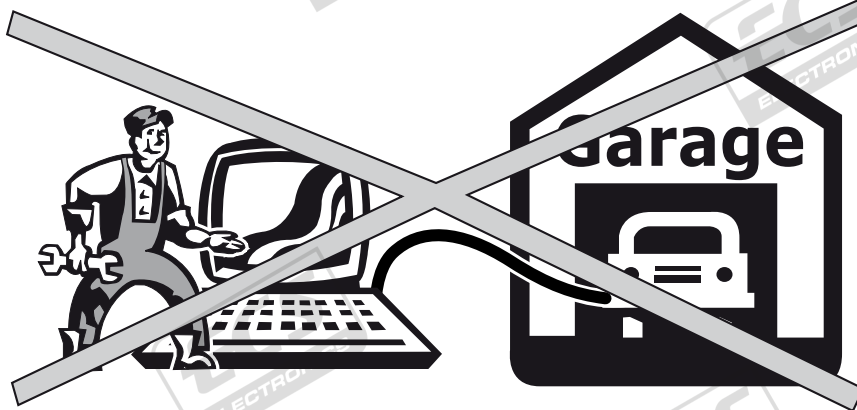
64



65



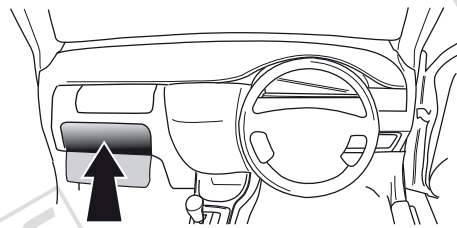
66



**!** TEST ALL THE CIRCUITS WITH A TEST DEVICE WITH THE CORRECT POWER LOAD FOR EACH FUNCTION. A TEST DEVICE WITH LED'S CANNOT BE USED FOR THIS PURPOSE.

## INFO

REINSTALL TRIM.



**User guide**

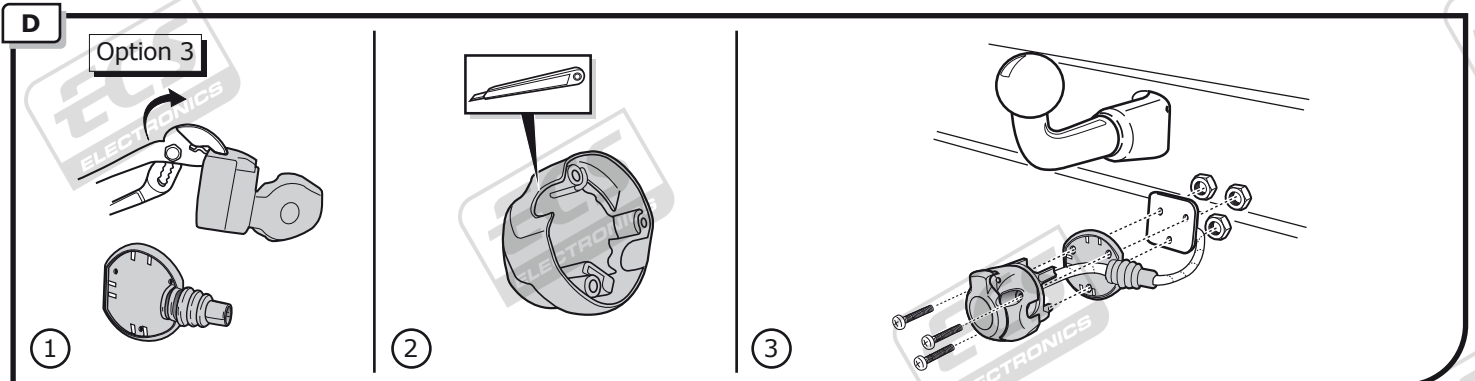
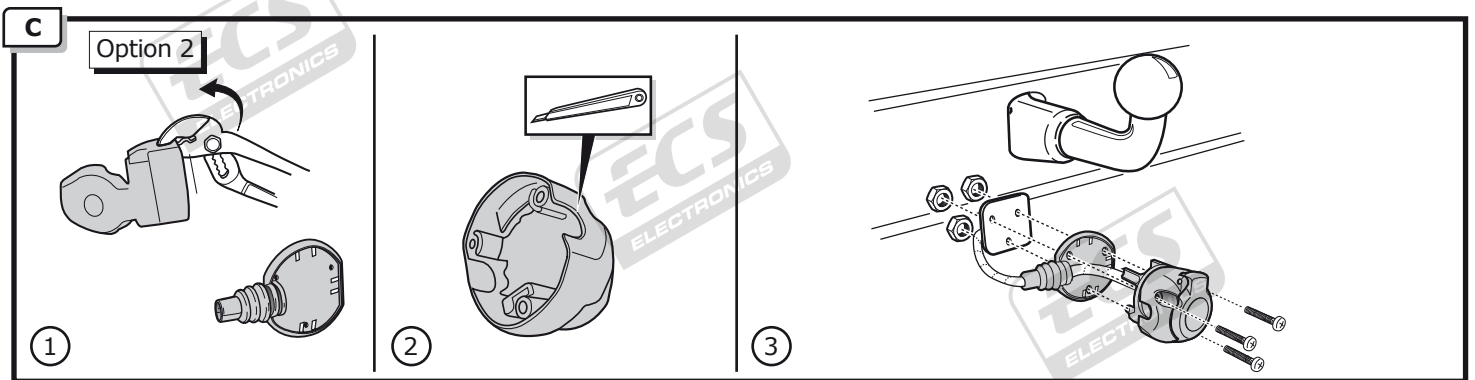
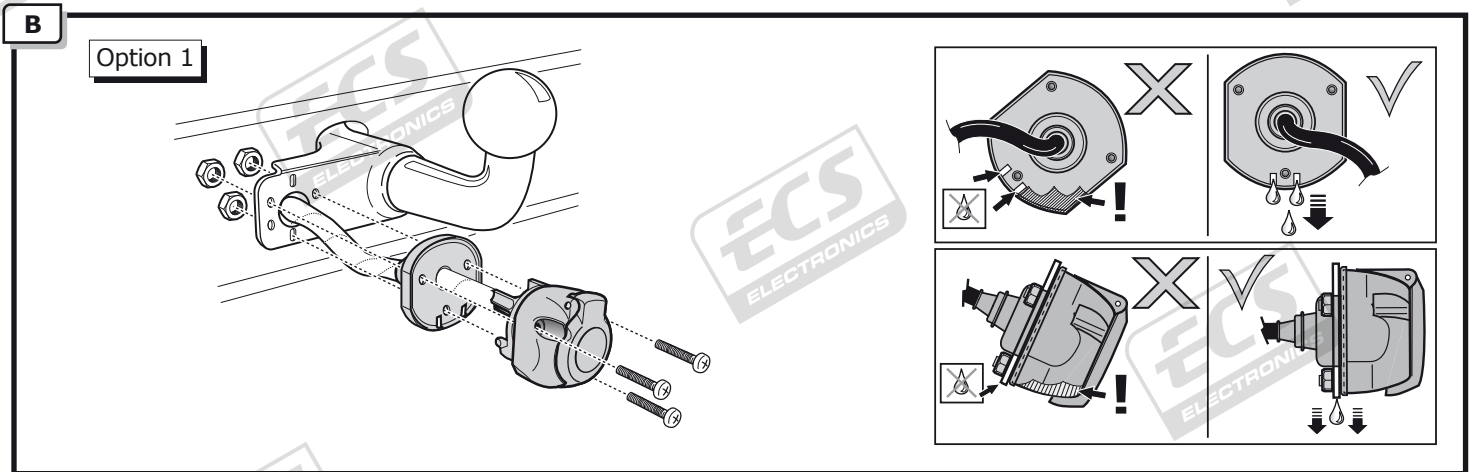
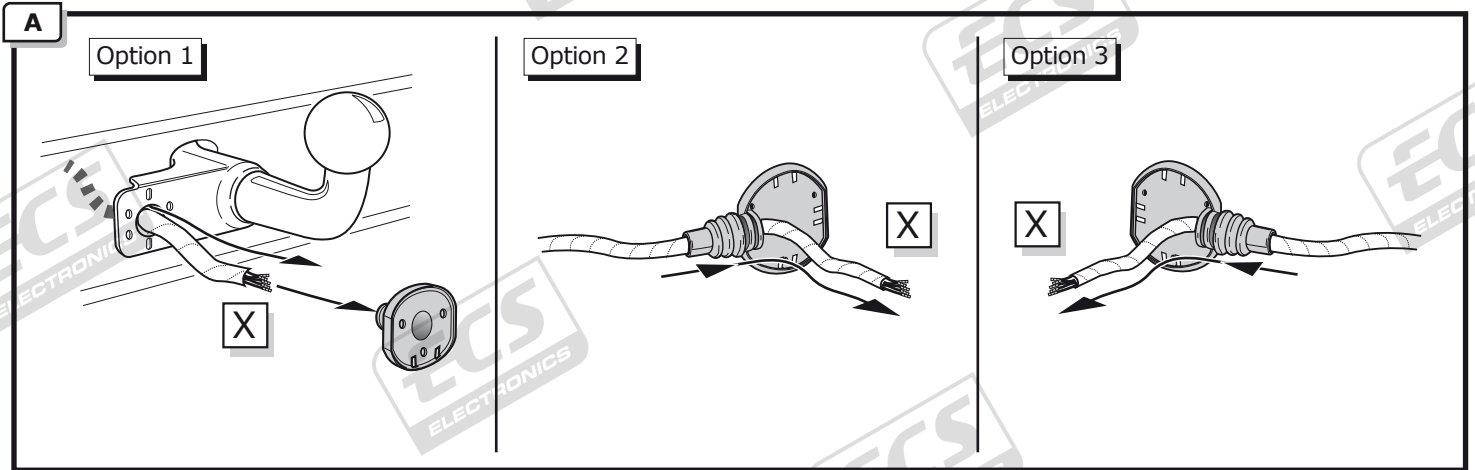


## INFO

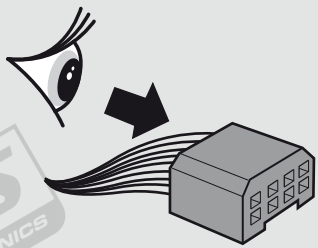
### SOCKET CONNECTION




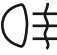




DIN/ISO 1724	←	←	⏏ 1-7	→	☀	⊙ (STOP)	☀
	1/L	2	3/31	4/R	5/58-R	6/54	7/58-L
Pmax	21W	21W	21W	21W	42W	3x21W	42W
Colour	Yellow	Blue	White	Green	Brown	Red	Black

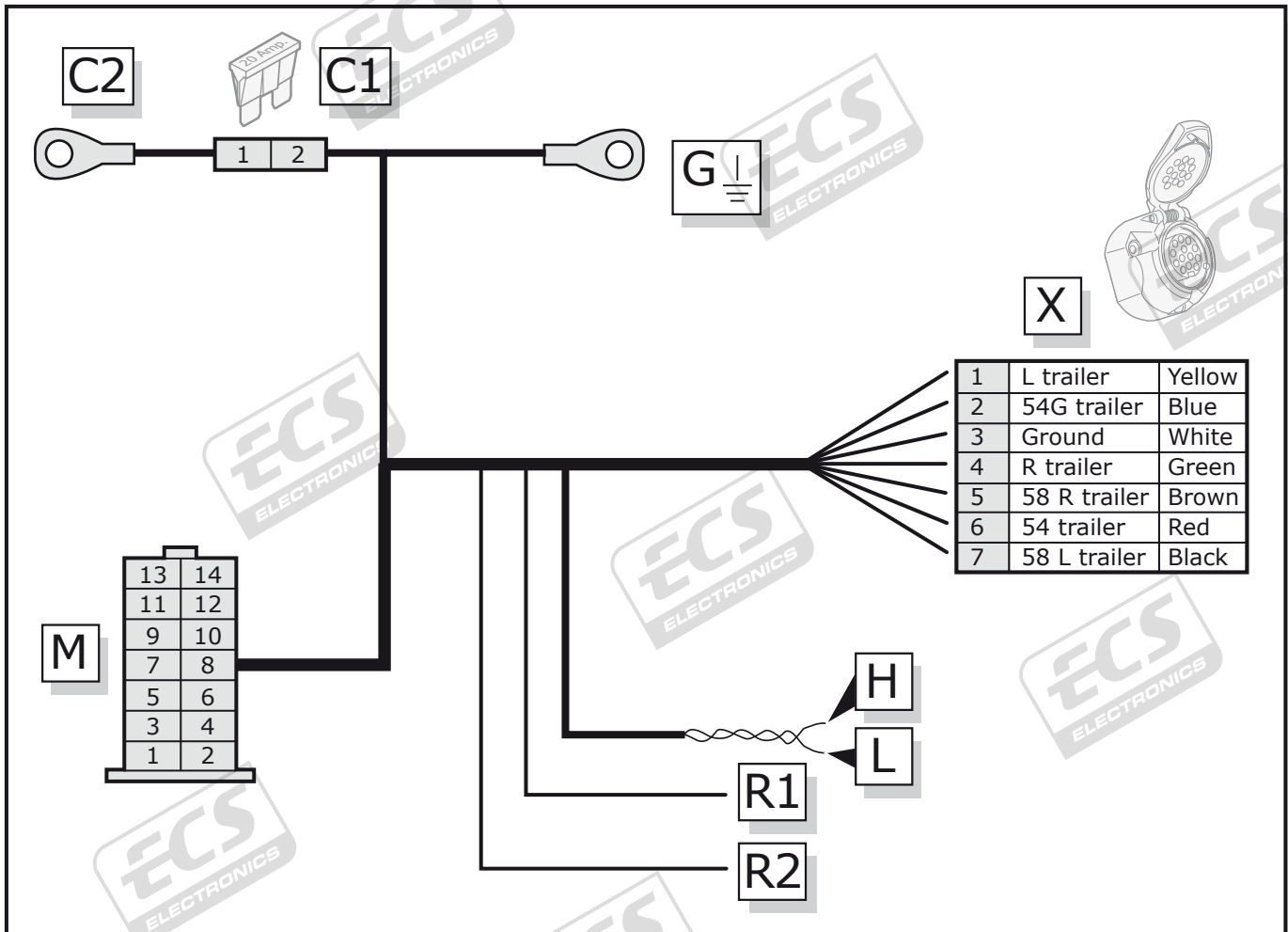
# INFO SOCKET CONNECTION



# INFO POWER SCHEDULE BW-008-B1U



L		54	
R		54G	
58L		BU	
58R		Ground/31	



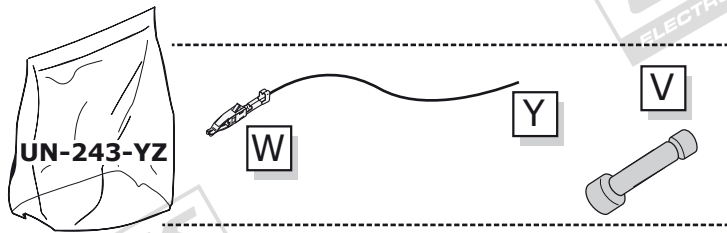
<b>M</b>	1	Red	54 trailer	out
	2	Orange	+30 (12 V)	in
	3	Red/White	R	in
	4	Yellow	L trailer	out
	5	Blue/Red	54	in
	6	Black	58 L trailer	out
	7	Green	CAN L	in
	8	White	Ground	-
	9	Green/Orange	CAN H	in
	10	Green	R trailer	out
	11	Blue	54G trailer	out
	12	Brown	58 R trailer	out
	13	-	-	-
	14	Orange	+30	in

<b>H</b>	Green/Orange	Can H	in
<b>L</b>	Green	Can L	in
<b>R1</b>	Blue/Red	54	in
<b>R2</b>	RD/WH	R	in
<b>G</b>	WH	Ground	-

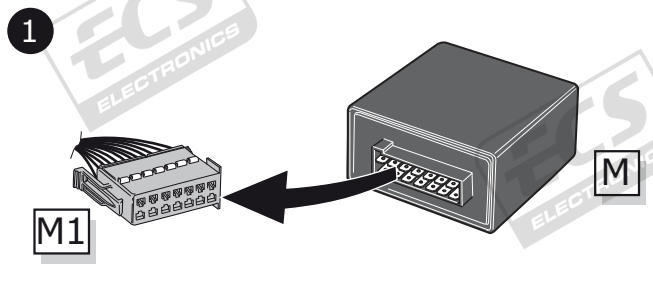
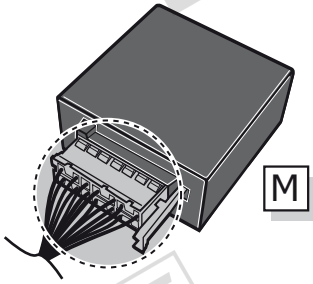
<b>C1</b>	1	Red	+30 (12 V)	in
	2	Orange	+30 (12 V)	out

# UN-243-YZ Reverse lamp pre-wire extension

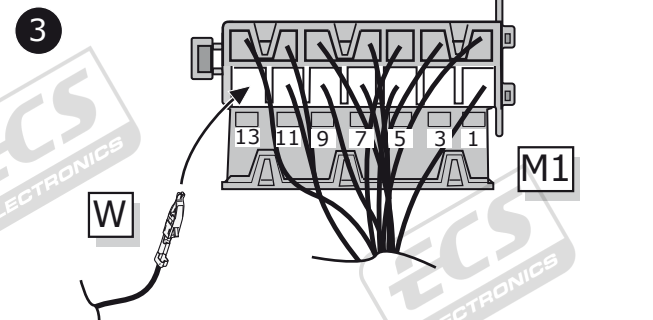
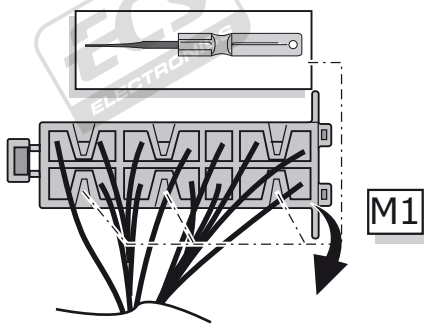
⚠ MAX = 21W



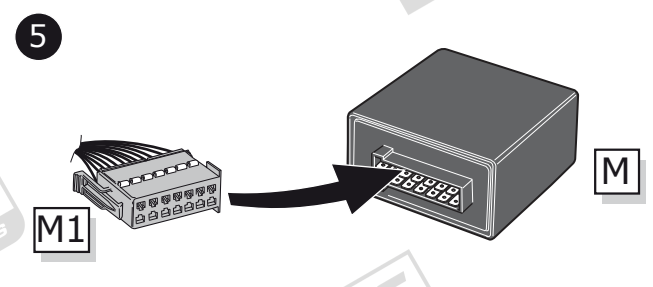
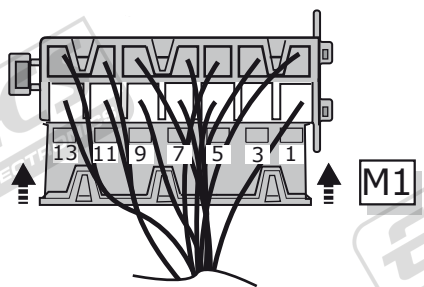
**A**



**2**



**4**



**B**

⚠ MAX = 21W

